

Cartridges & Cartridge Accessories



TWIN MR11 TWO-PIECE CARTRIDGES



Albion's Twin MR11 Cartridge Assemblies come complete with one cylinder, one piston and one plug. Connection points on all sizes are identical. Designed for use with any Albion Bell Type Static Mixer and 544-7 Connecting Nut. SEE REVERSE SIDE.

CART NO.	CAPACITY	LENGTH
741-G01	750ml (25oz)	8.5"
741-G02	300ml (10oz)	8.5"
741-G03	150ml (5oz)	8.5"
741-G05	75ml (2.5oz)	8.5"

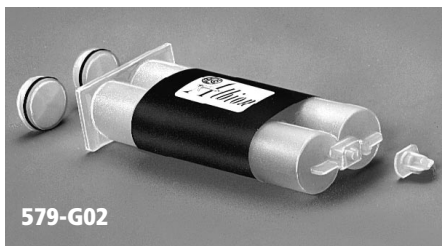
Any 2 Cartridges
Fit Together

Check our Web Site
for new items!
albioneng.com

DUAL-COMPONENT ONE-PIECE CARTRIDGES



579-G01



579-G02



741-G06

Albion's One-Piece Dual-Component Cartridge Assemblies are designed for use on small jobs.

CART NO.	CAPACITY	CYL SIZE	FITS MODELS	MIXER TYPE
579-G01	8 oz (4oz / 4oz)	1 $\frac{1}{8}$ "D x 8"L	535, 550	Twist-Lock
579-G02	2 oz (1oz / 1oz) 50ml (25ml / 25ml)	$\frac{3}{4}$ "D x 4"L	600-1	Twist-Lock
741-G06	150ml (75ml / 75ml)	1 $\frac{3}{8}$ "D x 4 $\frac{1}{2}$ "L	806-1P, 798-1P 585-1	Bell-Type

STANDARD CARTRIDGES



Static Mixers and Industrial Style Cartridges on reverse side.

Albion's Standard Cartridge is designed for general use applications. High-density polyethylene plastic cylinder and piston. Suitable for most standard cartridge models.

ITEM NO.	DESCRIPTION
453-1	CARTRIDGE: Capacity $\frac{1}{10}$ gallon; Size 2" D x 8 $\frac{1}{2}$ " L
454-1	PLUNGER: Fits into 453-1 cartridge



ALBION Engineering Co.
1250 N. Church Street
Moorestown, NJ 08057-1102
856-235-6688

www.albioneng.com

FAX TOLL-FREE: 800-841-7132
(USA, Canada, Puerto Rico
& US Virgin Islands)

INTERNATIONAL FAX: 001-856-235-9460
E-MAIL: service@albioneng.com

Catalog
263B

INDUSTRIAL STYLE CARTRIDGES



383-250-WP
PISTON

383-250-
CARTRIDGE

383-250-T
PLUG



383-229-F
BACK SEAL

383-229-756
PISTON

383-229-689
CARTRIDGE

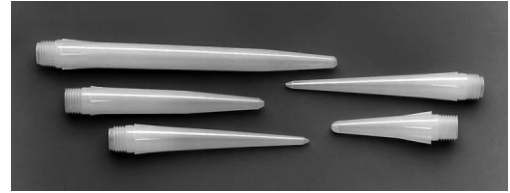
383-250-TS
FRONT SEAL

Albion's Industrial Style 383 Cartridge Assemblies are ideal for low viscosity epoxy and other sophisticated resins. Suitable for both industrial and field applications.

CART NO.	CAPACITY	SIZE	FITS MODELS
383-250-C2½	2½ oz	1½"D x 2½"L	462, 467, 785
383-250-C6	6 oz	1½"D x 6"L	462, 467, 785
383-250-C8	8 oz	1½"D x 8"L	462, 467, 785
383-250-C12	12 oz	1½"D x 12"L	462, 467, 785
383-229-689	¼ gallon	2"D x 8½"L	Standard ¼ gallon model

PLASTIC NOZZLES FOR 383 SERIES CARTRIDGES

NO ADAPTOR NECESSARY



NO.	SIZE
¼" NPS THREAD	
383-252	¼"D x 2"L
383-410	½"D x 4"L
383-420	½"D x 4"L
383-430	¾"D x 4"L
383-640	½"D x 6"L

Nozzles can also be used with all Albion gun models.
Requires No. 27-2 Thread Adaptor

Albion offers a complete selection of Nozzles, Special Tools and Accessories

CATALOGS SENT ON REQUEST

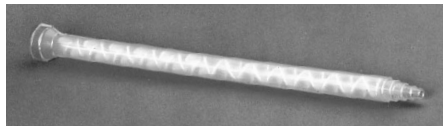
or visit our website for everything you need to seal a joint from beginning to end.

www.albioneng.com

STATIC MIXERS

BELL TYPE

Fits Albion's Twin-MR11 Two-Piece Cartridge Assemblies

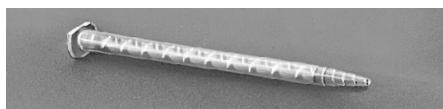


PART NO.	DIAM	LENGTH	ELEM
484-160-632	¼"	9½"	32
484-160-624	¼"	7½"	24
484-160-824	⅜"	9⅜"	24
484-160-818	⅜"	7⅜"	18
484-260-812*	⅜"	5½"	12
484-161-230	½"	14⅞"	30
484-161-224*	½"	11⅞"	24

*USCS Polypropylene elements

TWIST LOCK

Fits Albion's Dual-Component No. 579-G01 and No. 579-G02 One-Piece Cartridge Assemblies



PART NO.	DIAM	LENGTH	ELEM
484-190-620	¼"	6"	20

CONNECTING NUT

Part No. 544-7

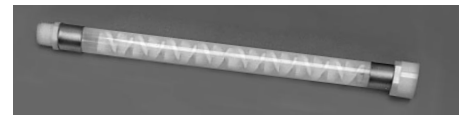


FEATURES

- ✓Fast-action double-lead thread
- ✓Mates Bell-Type Static Mixer to any 741 Cartridge System
- ✓Plastic

PIPE STYLE

Exclusively for 635 Twin-Models



DISPOSABLE PLASTIC TYPE

Connects directly to manifold outlet. Has a built-in ¾" NPT threaded coupling, eliminating the need for a separate connecting nut.

PART NO.	DIAM	LENGTH	ELEM
484-146-6246F4M	¾"	20¼"	24
484-146-6166F4M	¾"	15"	16

NOTE: This mixer requires a 712-G01 Extension Nozzle when used with 670-2 Rolling Cart.



REUSEABLE STAINLESS STEEL TYPE

Includes three 8-element plastic mixer sticks.

PART NO.	DIAM	LENGTH	ELEM
484-085-624	¾"	16½"	24

NOTE: This mixer requires a 138-17 Coupling Nut (shown) to connect to the manifold outlet

484-121-608: 8-element plastic replacement sticks