

LOADING A SAUSAGE GUN

The Best Just Keeps Gettin' Better!®

✓ Bulk

✓ Sausage

✓ Cartridge

✓ Multi-Component

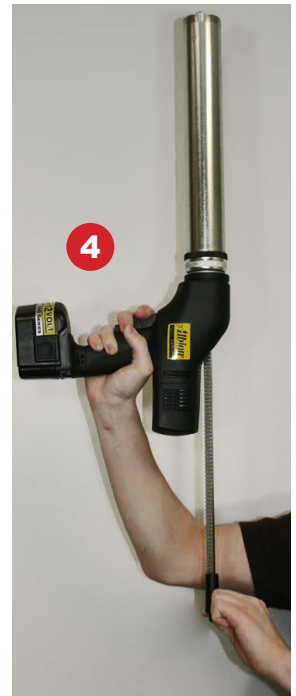
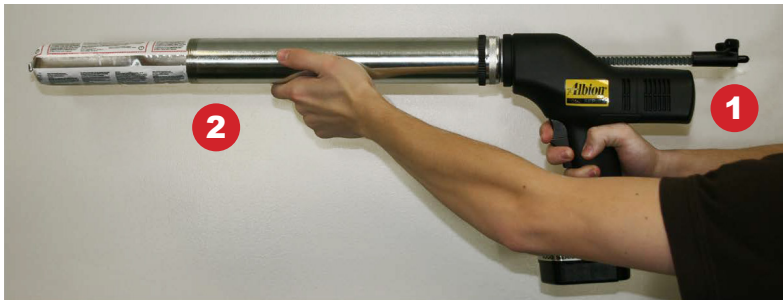
✓ Accessories

LOADING

Completely retract rod, then insert sausage.

If the Sausage will not fit in the barrel easily please follow these steps.

1. Pull rod approximately 1/3 of the way back.
2. Insert Sausage pack into barrel. It should reach the piston.
3. Tilt the gun upwards.
4. Pull the rod all the way back. The Sausage should follow.
The Sausage should be even or below the barrel lip.
It is acceptable if the tie is sticking above the barrel lip.



IMPORTANT: Do not take barrel off without taking piston packing apart first. Assemble packing while barrel is attached to handle.

PROBLEMS? ALBION CUSTOMER SERVICE IS HERE FOR YOU! (856) 235.6688

Occasionally sausage rupture or pinching may occur. If this happens, the rack and barrel must be cleaned. A barrel brush like 800-G01 or 800-G02 is useful for cleaning cured material in the barrel. If the sausage gets pinched by the piston, a new piston (21-20) will be needed.

BARREL BRUSHES

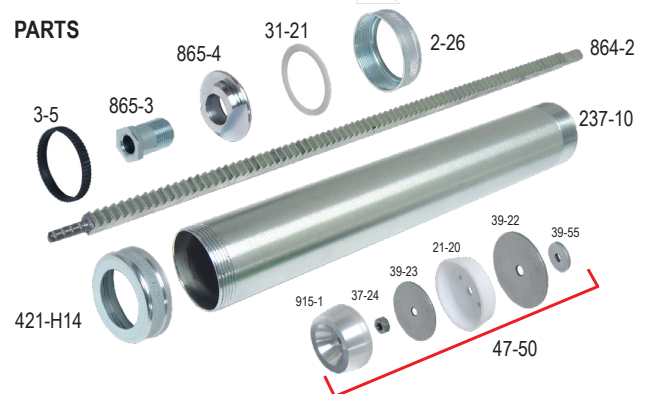
800-G01



800-G02



PARTS



1250 N Church St., Moorestown, NJ 08057 | 856.235.6688 | Service@albioneng.com | www.albioneng.com

201807