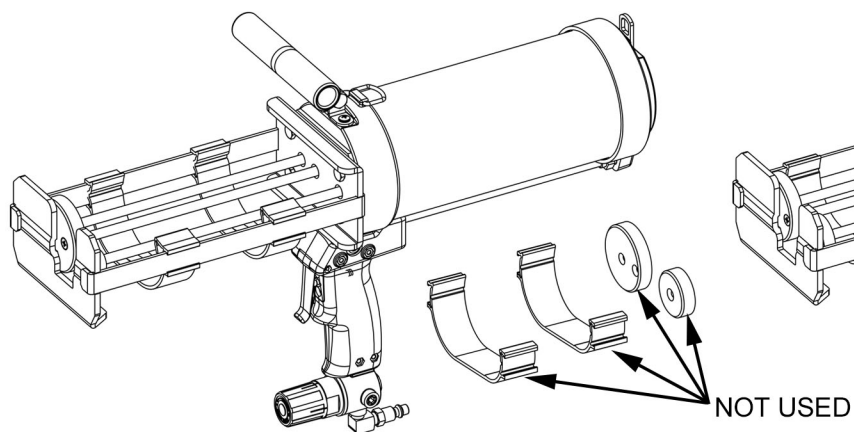
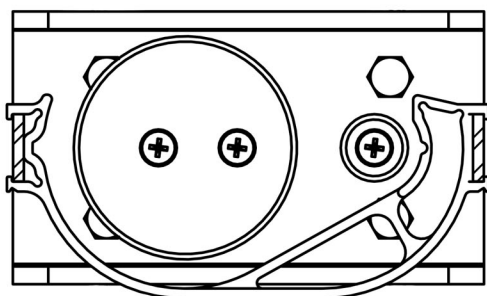


10:1 SET-UP(750/75ml)

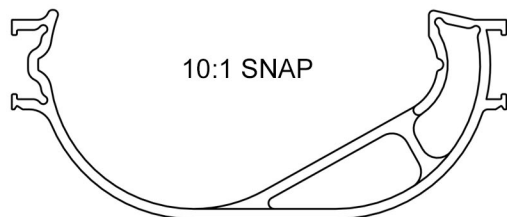
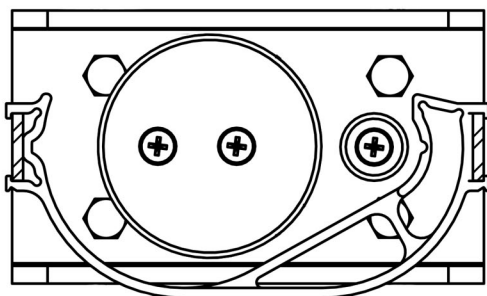
2:1 SET-UP(600/300ml)



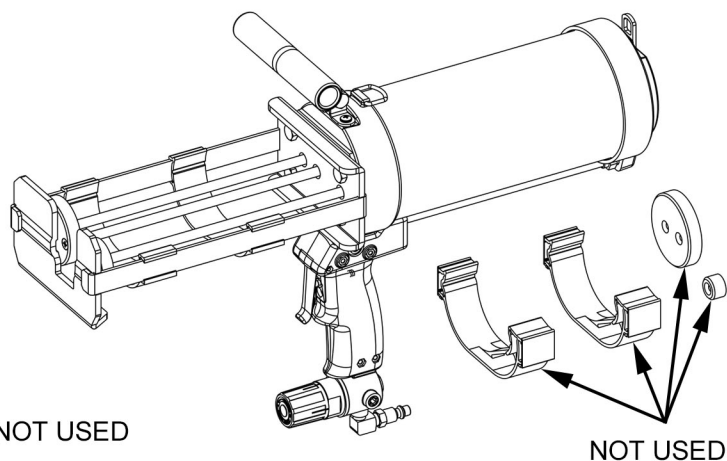
CORRECT



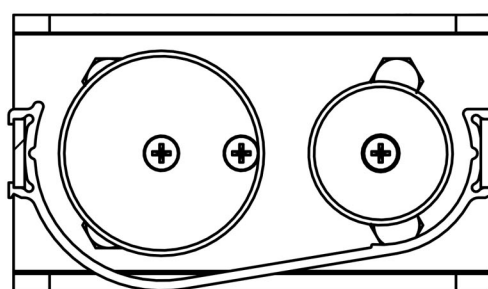
INCORRECT



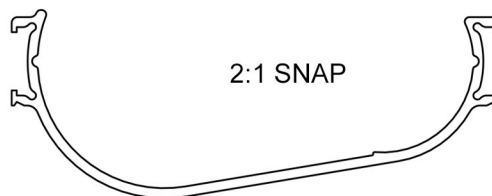
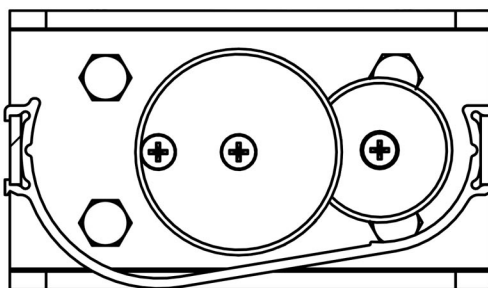
10:1 SNAP



CORRECT



INCORRECT



2:1 SNAP

THERE ARE 2 LARGE EJECTORS INCLUDED WITH TOOL. USE PROPER EJECTOR FOR EITHER 750/75ML OR 600/300ML CARTRIDGES. EJECTORS SHOULD BE CONCENTRIC WITH INSIDE OF STRAPPED WHEN PROPERLY INSTALLED. NOTE GAP BETWEEN 10:1 EJECTOR SETUP WHEN PROPERLY INSTALLED.