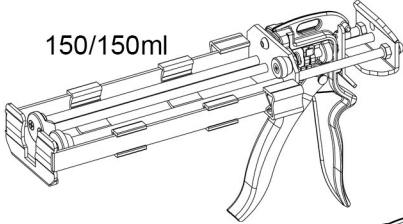
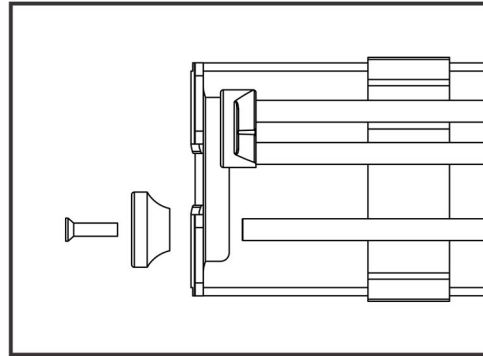
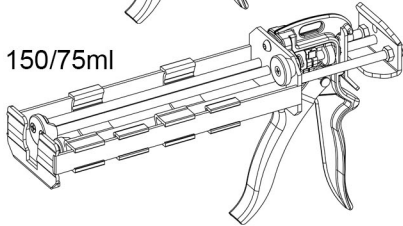


Instructions for 1:1 to 2:1 changeover, manual 150/150/75ml tool.

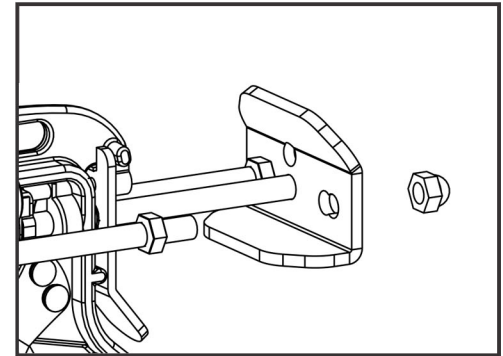
150/150ml



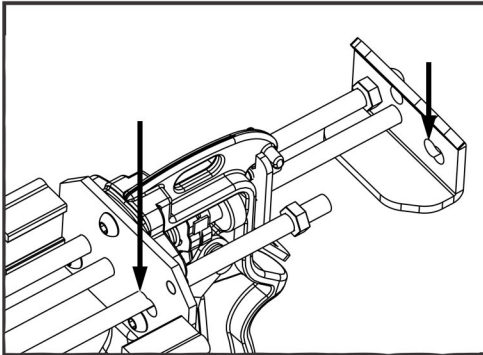
150/75ml



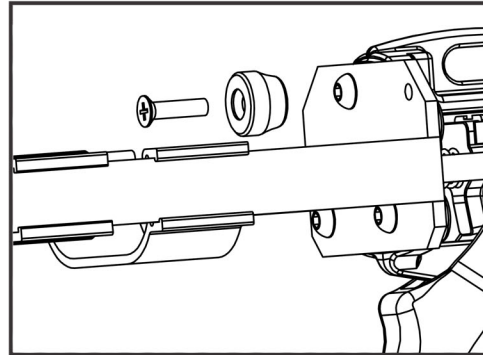
Step 1. Remove large ejector from left side



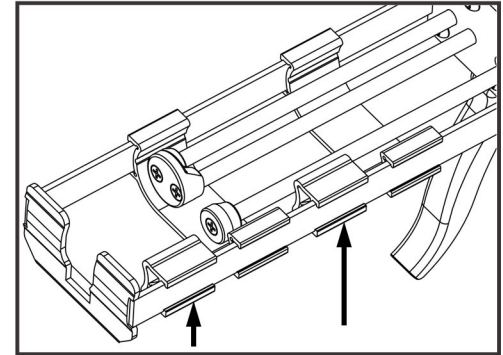
Step 2. Remove crown nut and rod from pull



Step 3. Move rod to inner position on back plate and pull. Re-tighten rod and crown nut to pull on the inner position.



Step 4. Remove small ejector from backplate and replace with large ejector. Use the long screw to attach ejector to backplate.



Step 5. Attach small ejector to rod. Place 75ml cartridge snaps inside the carriage as shown.