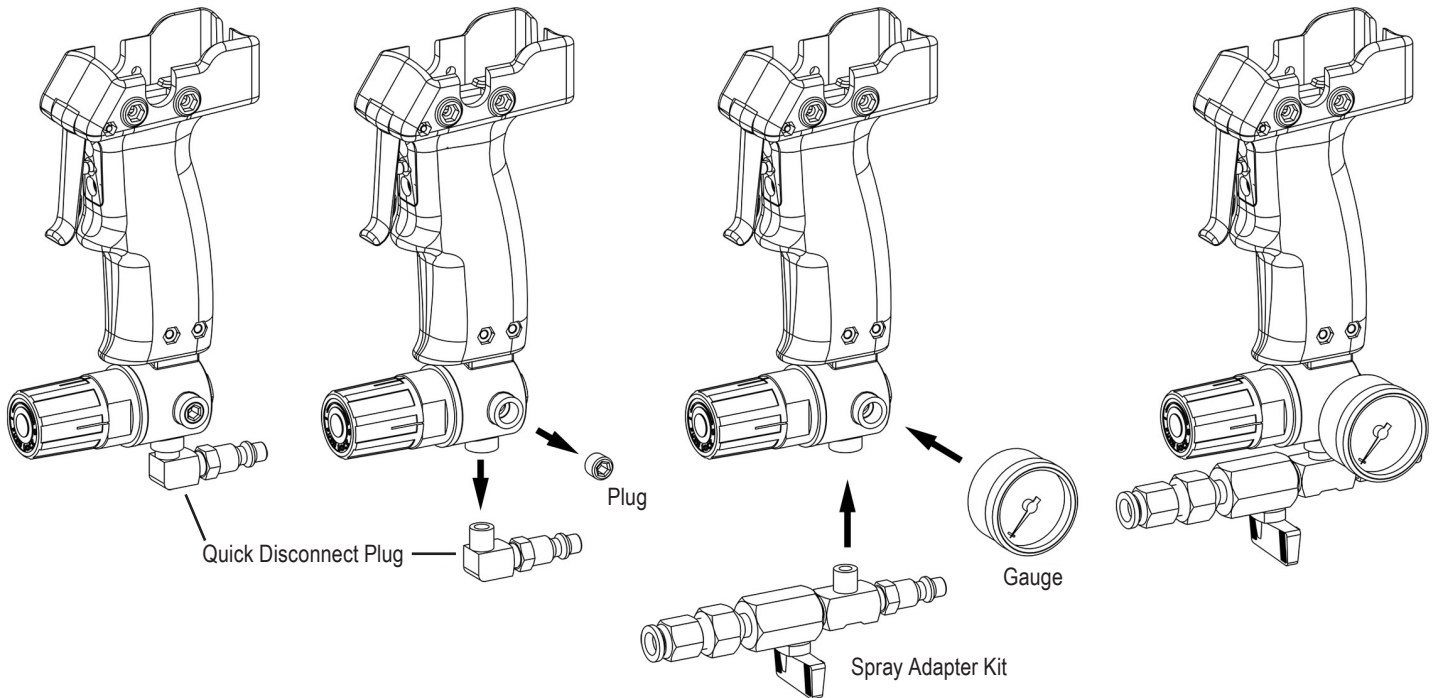


# Spray Kit Adapter Instructions

## CHANGEOVER (IF NEEDED)

**Step 1:** Remove quick disconnect plug and plug from regulator.

**Step 2:** Attached spray adapter kit and gauge (optional - included in 1042-2 kit) to regulator.



## OPERATING THE SPRAY ADAPTER

**Step 1:** Attach 3/8" dia. hose to spray adapter and attached 90 deg. elbow. Trim hose if too long.

**Step 2:** Attached 90 deg. elbow to the tip of static mixer. *\*If using a Sulzer static mixer, attached the quick lock adapter to the hose instead of the 90 deg. elbow.*

**Step 3: \*Important** - Before attaching compressed air to make sure air adjustment knob on the spray adapter kit is in the "off" position. The position of the knob should be perpendicular to the air line. Once the air line is attached and the cartridge are properly inserted into carriage the tool is ready for use. The spray adapter knob controls airflow to the static mixer. This flow can be adjusted by turning the knob. See instruction sheet #129 for general operating instruction for the tool.

