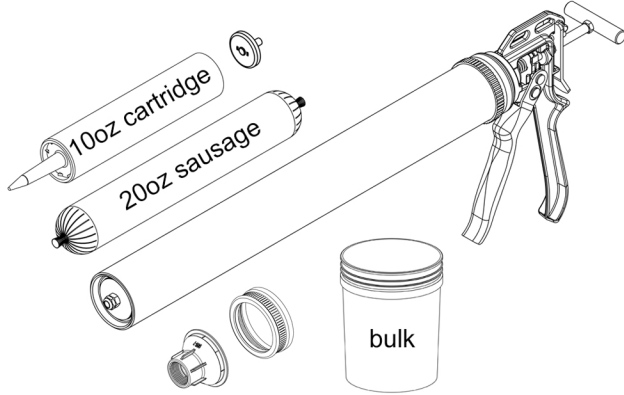
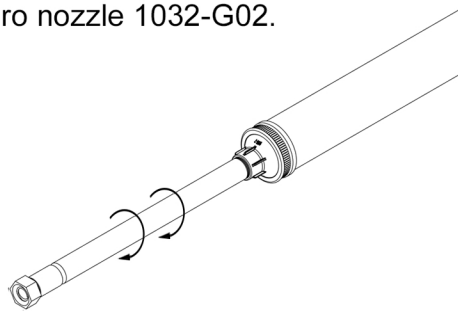


Spot-Pro® Instructions

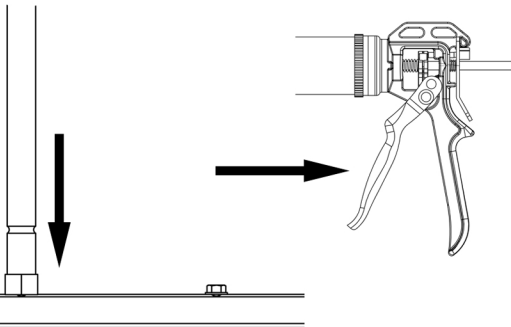
Load roof sealant in tool.



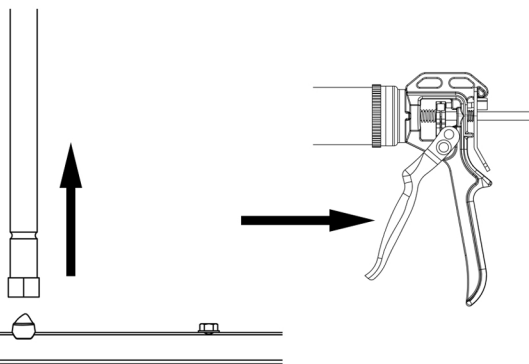
Attach Spot-Pro nozzle 1032-G02.



Activate Spot-Pro nozzle by pressing against screw head. Pull trigger several times to fill nozzle until sealant starts to flow.

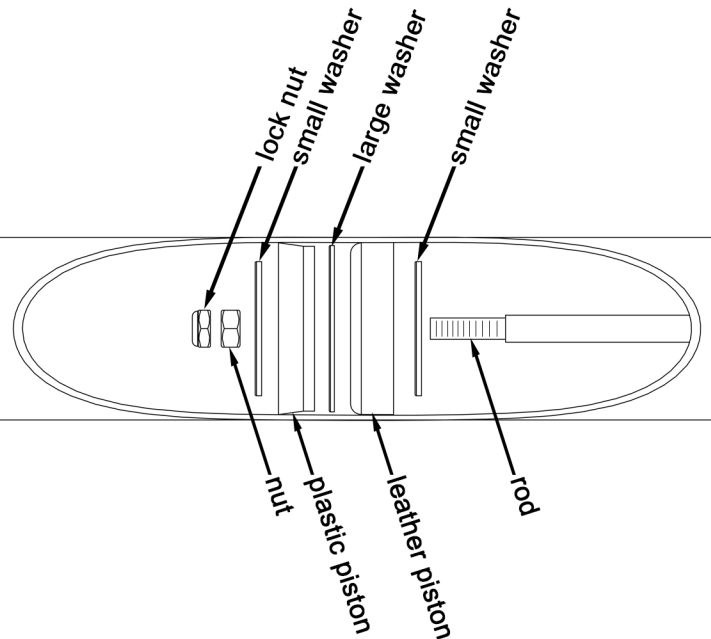


Remove Spot-Pro from screw head and re-pressurize gun by pulling trigger.

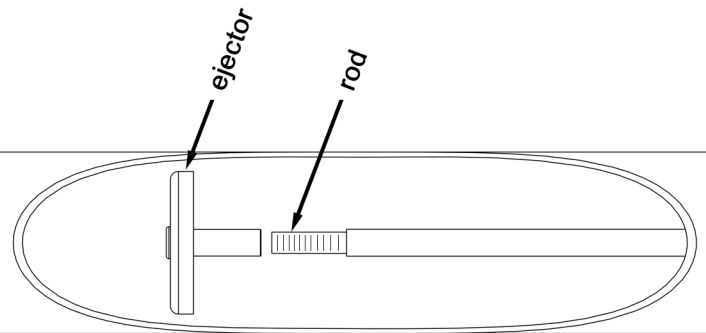


Press nozzle with pressurized material down onto screw head for 1 second to deposit dab of sealant. Keep material under pressure as you repeat procedure.

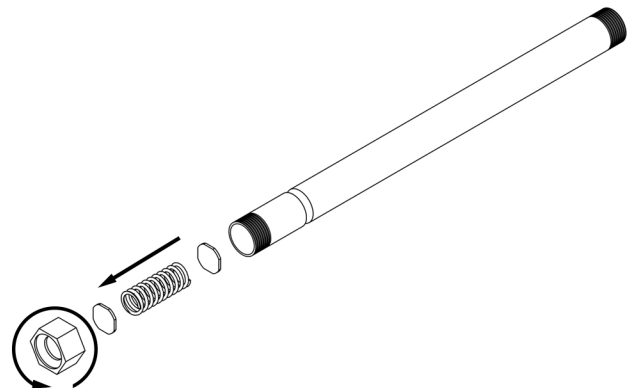
Bulk/Sausage Piston Set-up



Cartridge Set-up (remove bulk/sausage set-up)



Spot-Pro® Cleaning Instructions



1. Un-screw front cap from nozzle.
2. Remove washers and spring.
3. Clean nozzle and parts by using the material manufacturers recommended cleaning solvents.
4. Re-assemble parts.