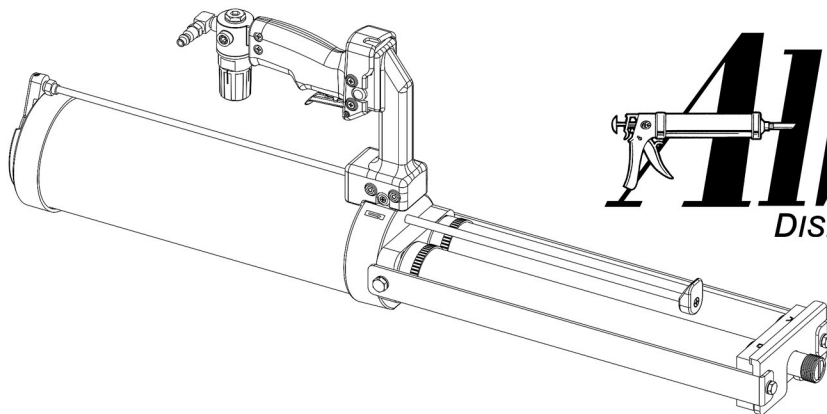
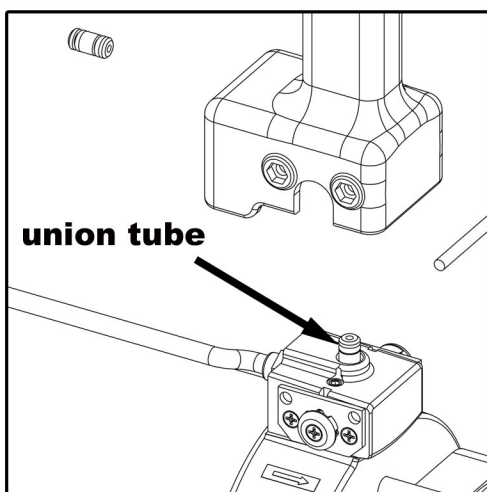
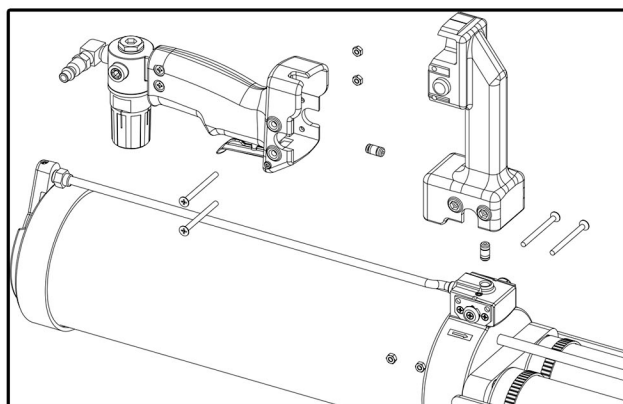


AT1200S HANDLE ASSEMBLY INSTRUCTIONS

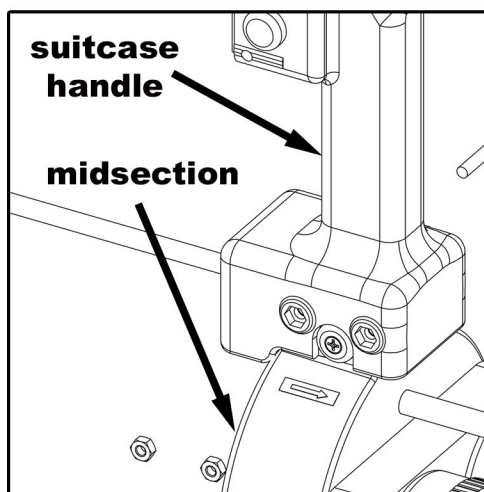


Steps

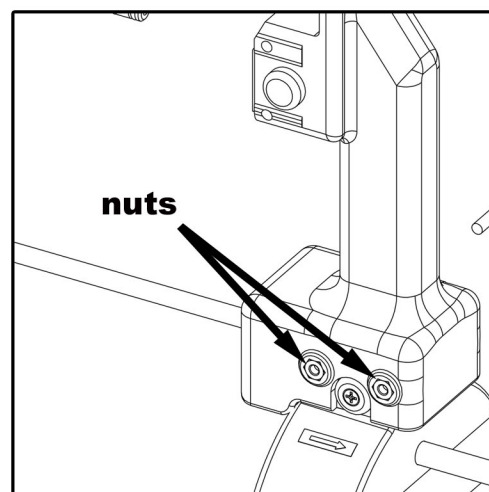
1. Insert Union Tube into midsection. Lube o-rings with supplied grease.
2. Insert suitcase handle onto midsection.
3. Place nuts into hex shapes in handle.
4. Insert screws and tighten into nuts.
5. Insert Union Tube into suitcase handle. Lube o-rings with supplied grease.
6. Attach main handle onto suitcase handle using screws and nuts. This process is the same as steps 3 & 4.



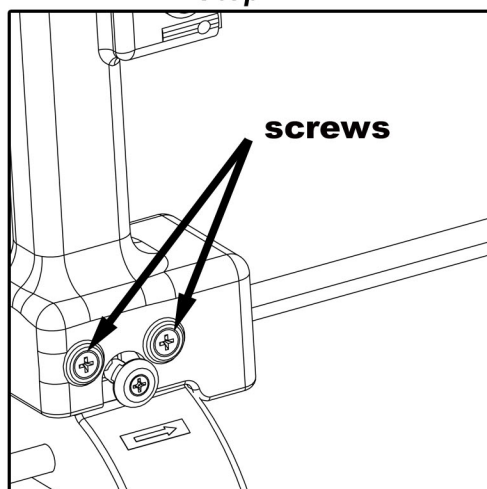
Step 1



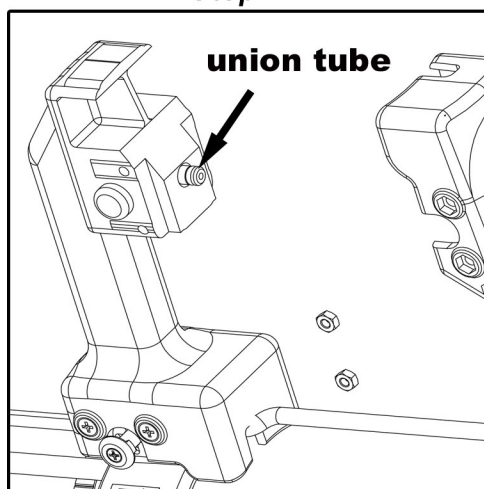
Step 2



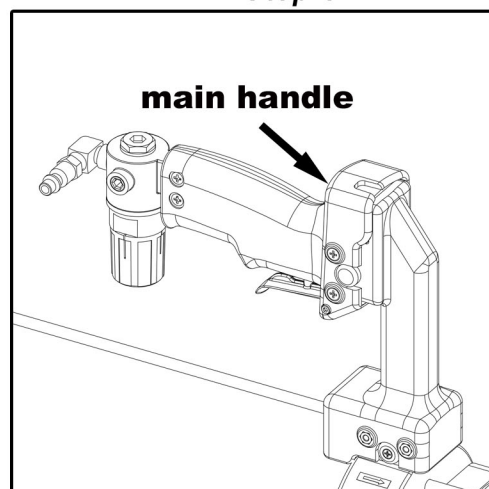
Step 3



Step 4

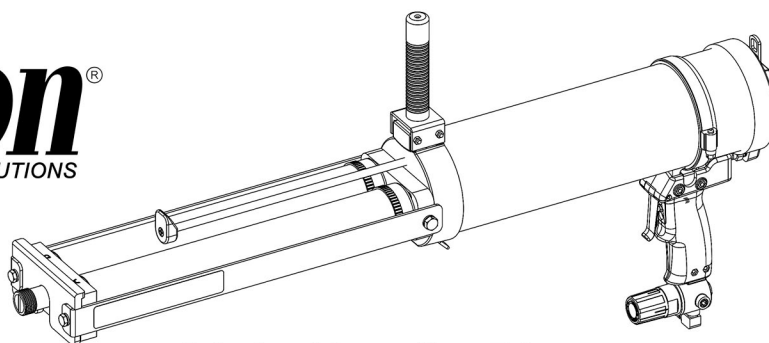


Step 5

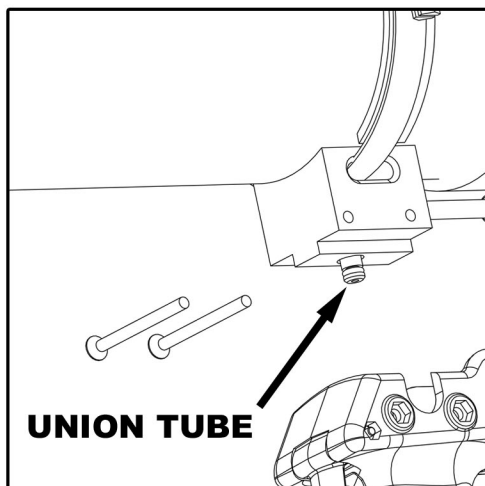
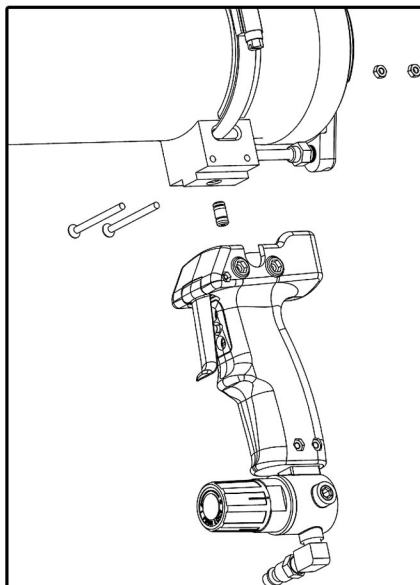


Step 6

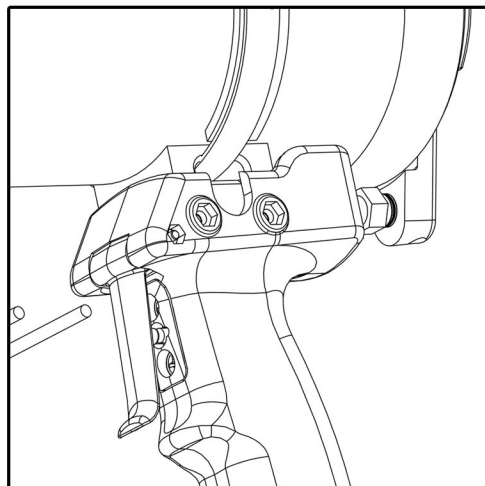
AT1200S-2 HANDLE ASSEMBLY INSTRUCTIONS



Main Handle Steps

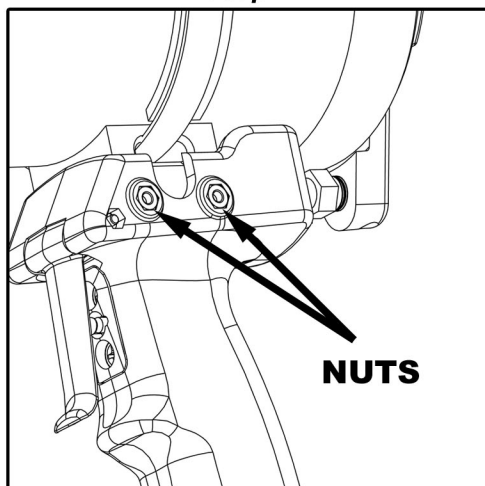


Step 1

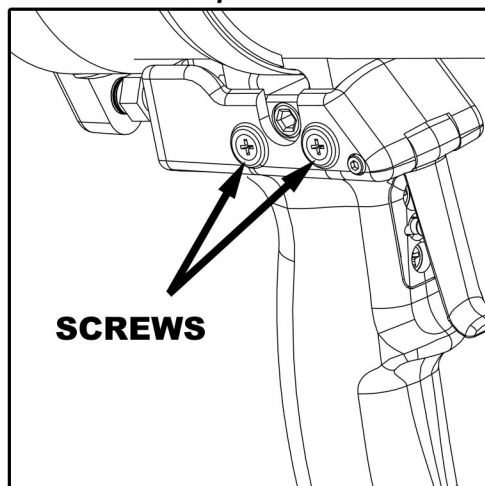


Step 2

1. Insert Union Tube into bracket. Lube o-rings with supplied grease.
2. Insert handle onto bracket.
3. Place nuts into hex shapes in handle.
4. Insert screws and tighten into nuts.

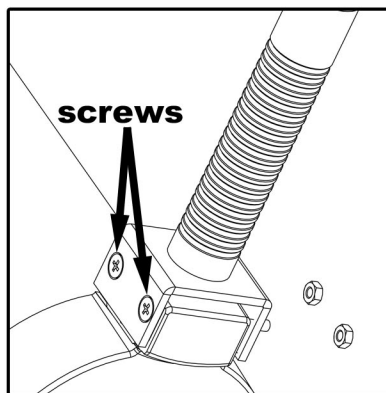
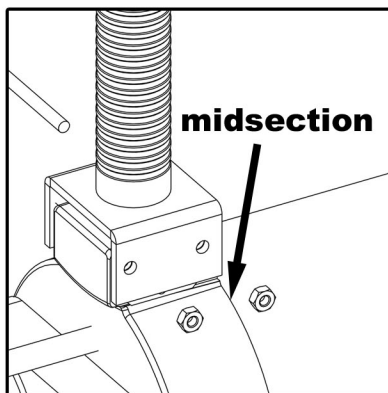
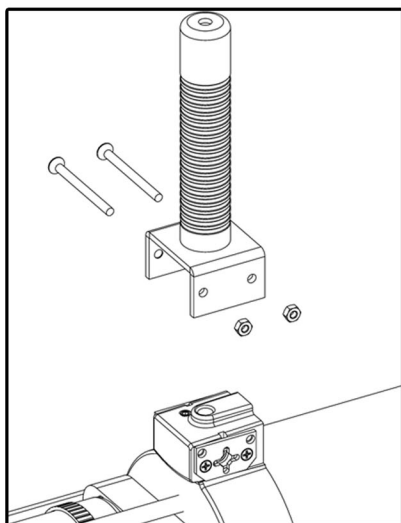


Step 3



Step 4

Top Handle Steps



1. Line up top handle with holes in midsection.
2. Insert screws through bracket & midsection then tighten nuts.

AT1200S & AT1200S-2 Operating Instructions

Safety

- 150 psi maximum operating pressure.
- Do not drop or let anything drop on the applicator.
- Do not damage or polish the piston rods.
- Store in a clean dry environment.
- Eye protection must be worn at all times when the applicator is in operation.
- Do not point the applicator at anyone while the tool is in operation.
- Do not place any part of your body either inside or in front of the material chambers while the applicator is connected to an air supply.
- Read the material safety data sheets (MSDS) on the material being used.

Cleaning

Keeping the applicator clean is important for long life and trouble free operation. Due to the tool's rugged construction, most solvents can be used to remove material. It is not recommended to immerse the tool in a cleaning agent, as this may adversely affect the internal seals of the applicator. Special care should be taken to ensure no material residue is left on the piston rods.

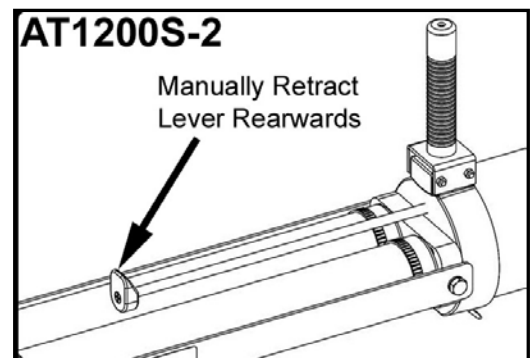
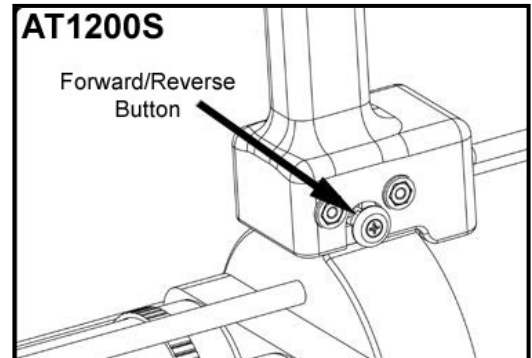
General dispensing instructions

Note: It is highly recommended that you advance and retract the pistons in an empty applicator until you are comfortable with its operation.

The dispensing rate of the applicator is determined by the air pressure used. It is advised to begin at the lowest pressure setting and adjust the pressure to your desired speed.

To load twin sausage packs into the chamber:

1. Retracting the piston rods:
 - a. **AT1200S model:** Retract piston rods by switching the forward/reverse button and then actuate the trigger to allow the piston rods to travel back into the barrel.
 - b. **AT1200S-2 model:** Retract piston rods by manually retracting the lever on the external rod to allow the piston rods to travel back into the barrel.
2. Rotate the swivel carriage out of the way so the aluminum manifold can be removed from the twin chambers.
3. Remove front retainer from sausages and insert sausages into the barrel with their opening facing towards the outside of the chambers. Note: ensure that the same sausage material is inserted into the same chamber every time to prevent a clogged system.
4. Insert aluminum manifold into the chambers until the flat portion of the manifold butts up to the barrel ends. Note: ensure that the manifold is inserted into the same chamber every time to prevent a clogged system.
5. Rotate swivel carriage over manifold so that its face sits evenly with the manifold face. Note: when dispensing, the chamber section of the manifold should not have a gap of more than 1/16" past the face of the barrel, as material leakage may result. The chambers can be adjusted by rotating them until the correct distance is achieved.



To dispense twin sausage packs:

1. Insert a static mixer onto the manifold. The manifold accepts standard 3/4NPS and NPT type threads.
2. With the regulator at low pressure, switch the forward/reverse button to the forward position (on the AT1200S model) and then actuate the trigger to allow the rods to travel forward to ensure the sausages are dispensing properly. Do not apply adhesive to the work area until the proper mixture is exiting the static mixer.
3. Lower the applicator to the desired work area and actuate the trigger and increase the air pressure while dispensing material until the desired dispensing rate is achieved.
4. While dispensing, note that the indicator rod is also advancing. When the sausages are empty, release the trigger to exhaust the air pressure within the tool.
5. Remove the empty sausages from the chambers by rotating the swivel carriage and removing the manifold. Actuate the trigger to remove the empty sausages.