

REVISIONS
 DESCRIPTION
 ADD NOTE 6

APPROVED

DATE

1/14/13

REV.

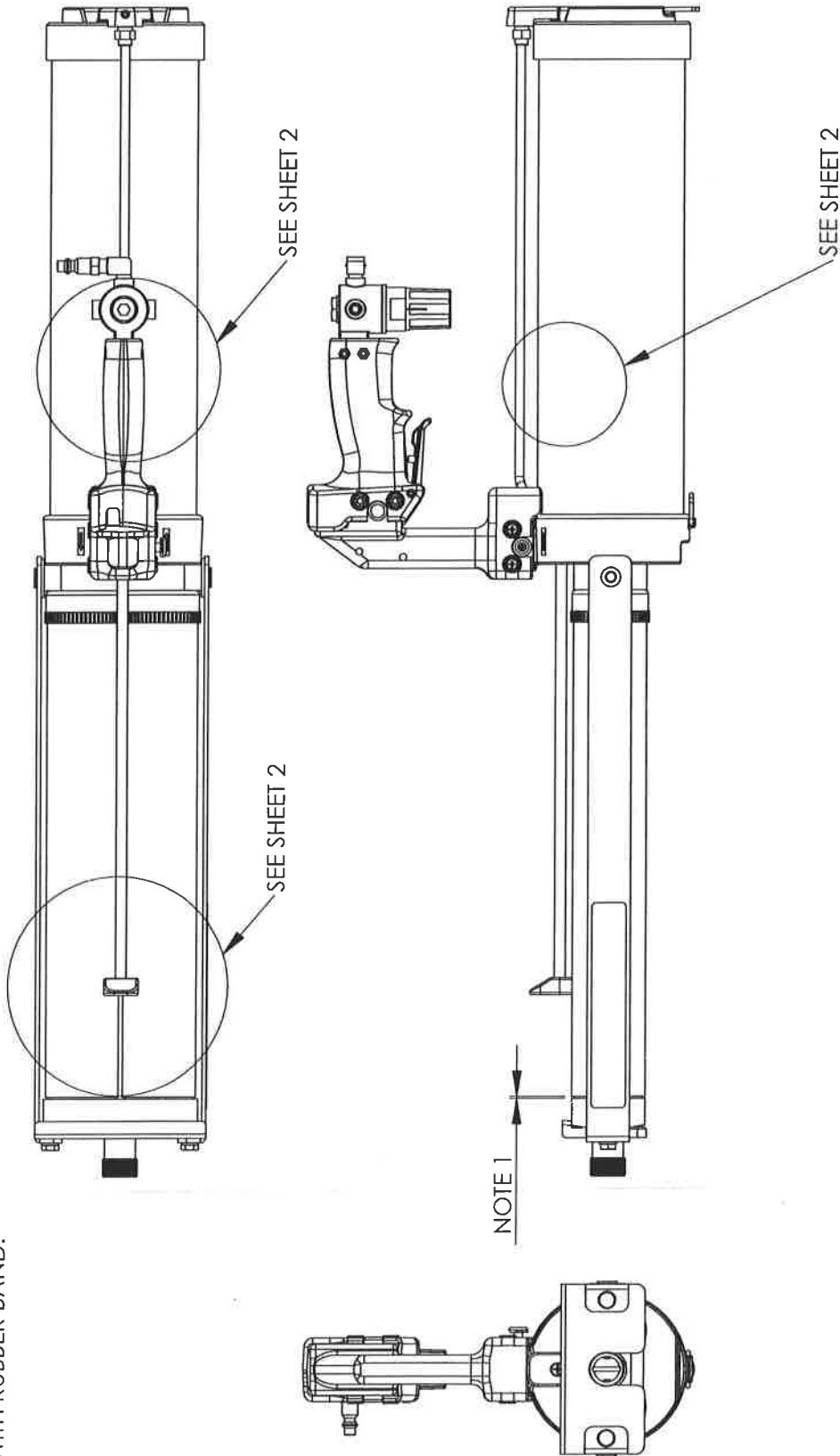
CN

1

CN1297

NOTE:

1. WHEN ASSEMBLED THERE SHOULD BE NO MORE THAN A 1/16" GAP BETWEEN THE MANIFOLD AND BARREL END.
2. USE BLUE LOCKTITE IN THESE AREAS.
3. USE GREASE IN THESE AREAS.
4. PACKINGS SHOULD BE EVEN WITH EACH OTHER AND PULL WHEN ASSEMBLED.
5. TURN QUICK DISCONNECT TO SIDE AS SHOWN ON SHEET 5.
6. SECURE (1) 501-141 INSTRUCTION SHEET AROUND BARREL WITH RUBBER BAND.



Albion
 DISTRIBUTION SOLUTIONS
 Albion Engineering Co.
 1250 N. Church St.
 Moorestown, NJ. 08057

SIZE **A**
 SCALE: 1:1.5

DIMENSIONAL TOLERANCES
 UNLESS OTHERWISE SPECIFIED
 FRAC: ±1/64" ANG: ±30' DEC: ±.005"

DATE 3/22/11

DRAWN BJM

APPROV GBA

ORIGIN DS548

MATERIAL

ALBION 447 MATERIAL SPEC.

FINISH

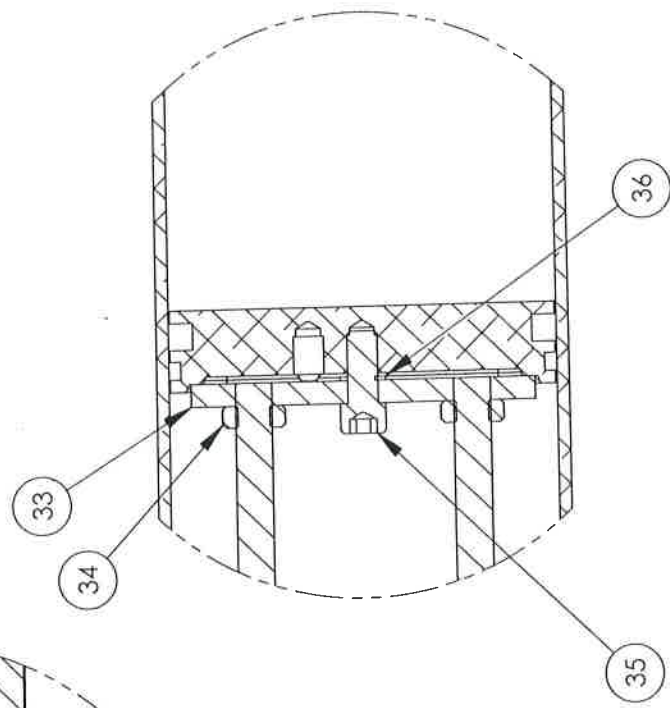
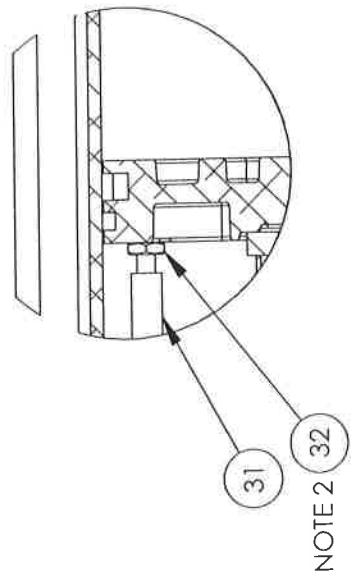
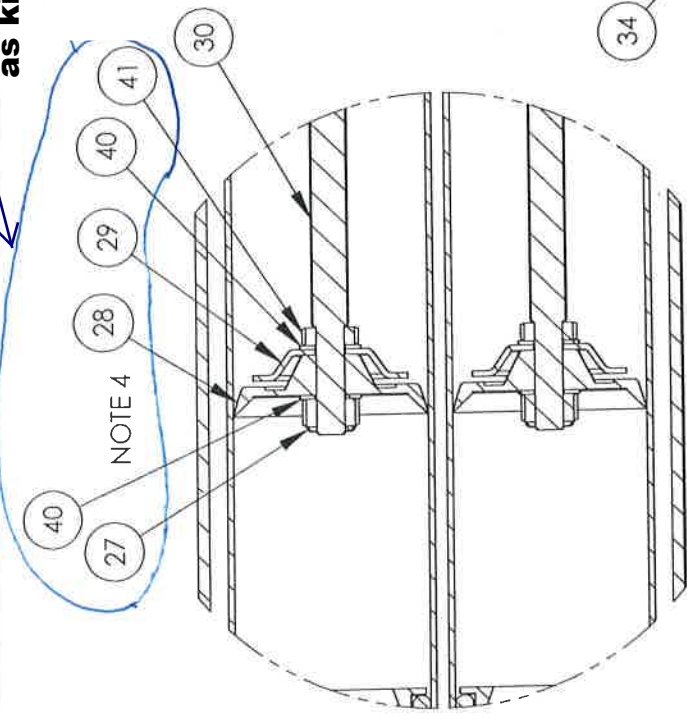
PROPRIETARY AND CONFIDENTIAL

THE INFORMATION CONTAINED IN THIS DRAWING IS THE SOLE PROPERTY OF ALBION ENGINEERING CO. ANY REPRODUCTION IN PART OR AS A WHOLE WITHOUT THE WRITTEN PERMISSION OF ALBION ENGINEERING CO. IS PROHIBITED.

DWG. NO. 954-9

REV. 1 SHEET 1 OF 5

Also available
as kit #957-30



CH	REV.	DESCRIPTION	DATE	APPROVED
CNI336	1	ADD ITEM 40 ITEMS 27 & 41 WERE PART #37-12	8/21/13	
CNI443	2	ADD (2) 39-111	6/15/15	

Albion
DISPENSING SOLUTIONS

Albion Engineering Co.
1250 N. Church St.
Moorestown, NJ. 08057

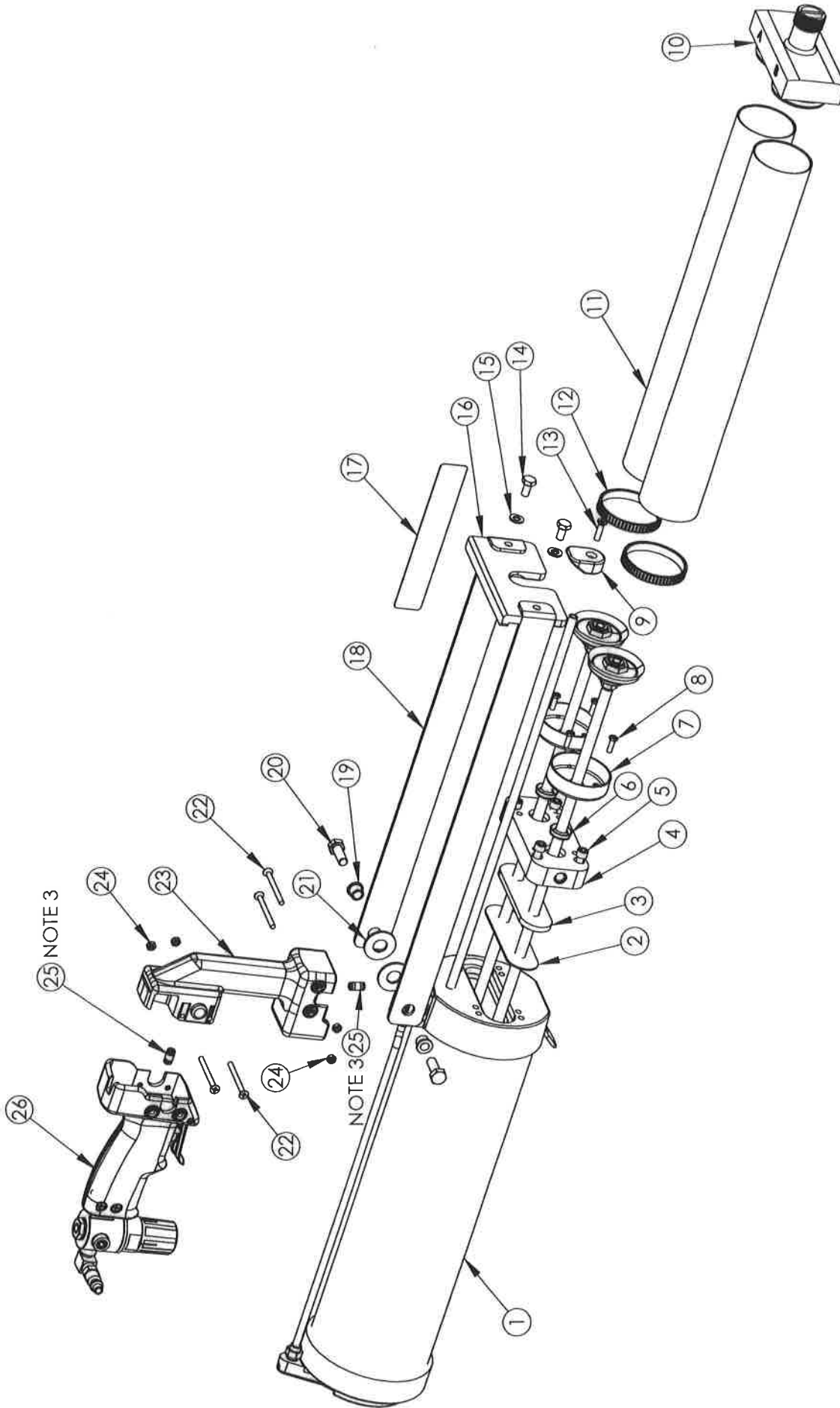
DWG. NO. 954-9
REV. 2
SHEET 2 OF 5

PROPRIETARY AND CONFIDENTIAL THE INFORMATION CONTAINED IN THIS DRAWING IS THE SOLE PROPERTY OF ALBION ENGINEERING CO. ANY REPRODUCTION IN PART OR AS A WHOLE WITHOUT THE WRITTEN PERMISSION OF ALBION ENGINEERING CO. IS PROHIBITED.	MATERIAL	DATE	3/22/11	SCALE	A
	ALBION 447 MATERIAL SPEC.	DRAWN	BJM	DIMENSIONAL TOLERANCES UNLESS OTHERWISE SPECIFIED FRAC. ± 1/64" ANG. ± 30' DEC. ± .005"	SCALE: 1:2
FINISH	APPROVD	ORIGIN	DS548	GUN, AIR, TWIN SAUSAGE AT1200S	

REVISIONS
DESCRIPTION

CN REV.

DATE APPROVED



NOTE 3

NOTE 3

Albion DISPENSING SOLUTIONS
 Albion Engineering Co.
 1250 N. Church St.
 Moorestown, NJ. 08057

SIZE **A**
 SCALE: 1:5

DIMENSIONAL TOLERANCES UNLESS OTHERWISE SPECIFIED
 FRA C. ± 1/64" ANG. ± 30' DEC. ± .005"

DATE 3/22/11
 DRAWN BJM
 APPVD *[Signature]*
 ORIGIN DS548

GUN, AIR, TWIN SAUSAGE
 AT1200S

DWG. NO. 954-9
 REV.
 SHEET 3 OF 5

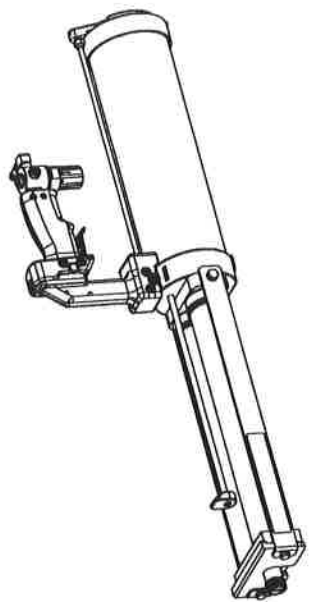
PROPRIETARY AND CONFIDENTIAL
 THE INFORMATION CONTAINED IN THIS DRAWING IS THE SOLE PROPERTY OF ALBION ENGINEERING CO. ANY REPRODUCTION IN PART OR AS A WHOLE WITHOUT THE WRITTEN PERMISSION OF ALBION ENGINEERING CO. IS PROHIBITED.

MATERIAL
 ALBION 447 MATERIAL SPEC.

FINISH

CN	REV.	DESCRIPTION	DATE	APPROVED
CN1291	1	THREAD SPEC. FOR 10-97 WAS 1/4-28	7/18/12	
CN1310	2	THIS CORRECTION WAS A TYPO NOT AN UPDATE TO PART	2/6/13	

ITEM #	PART #	DESCRIPTION	QTY
1	955-7	DRIVE ASSEMBLY	1
2	972-4	ROD GASKET	1
3	972-5	ROD LOCATOR	1
4	972-1	BACK PLATE	1
5	10-98	1/4-20 SOCKET HEAD SCREW	4
6	534-1	U-CUP	2
7	2-28	BACK CAP	2
8	10-73	10-32 HEX HEAD SCREW	4
9	972-3	PULL, INDICATOR ROD	1
10	645-G05	MANIFOLD	1
11	237-37	BARREL	2
12	3-5	LOCKRING	2
13	10-77	10-24 FLAT HEAD SCREW	1
14	10-57	1/4-28 HEX HEAD SCREW	2
15	39-110	WASHER	2
16	606-4	FRONT PLATE	1
17	500-538	LABEL	1
18	972-2	SIDE STRAP	2
19	512-18	PIVOT BEARING	2
20	10-97	5/16-24 HEX HEAD SCREW	2
21	512-17	BRONZE WASHER	2
22	10-103	M4 FLAT HEAD SCREW	4
23	978-62	SUITCASE HANDLE	1
24	37-43	M4 NUT	4
25	957-5	UNION TUBE	2
26	981-1	HANDLE ASSEMBLY	1
27	37-12	5/16-18 NUT	4
28	873-6	PACKING	6
29	873-10	CONCAVE WASHER	2
30	366-59	PISTON ROD	2
31	672-3	INDICATOR ROD	1
32	37-4	10-32 NUT	1
33	652-4	ROD RETAINER	1
34	37-35	38-24 JAM NUT	2



PROPRIETARY AND CONFIDENTIAL THE INFORMATION CONTAINED IN THIS DRAWING IS THE SOLE PROPERTY OF ALBION ENGINEERING CO. ANY REPRODUCTION IN PART OR AS A WHOLE WITHOUT THE WRITTEN PERMISSION OF ALBION ENGINEERING CO. IS PROHIBITED.	MATERIAL	DATE	3/22/11	SEE	A
	ALBION 447 MATERIAL SPEC.	DRAWN	BJM	DIMENSIONAL TOLERANCES UNLESS OTHERWISE SPECIFIED FRAC. ± 1/64" ANG. ± 30' DEC. ± .005"	
FINISH	APPROV	DS548	GUN, AIR, TWIN SAUSAGE AT1200S		
		DWG. NO. 954-9 REV. 2 SHEET 4 OF 5		Albion Engineering Co. 1250 N. Church St. Moorestown, NJ. 08057	

