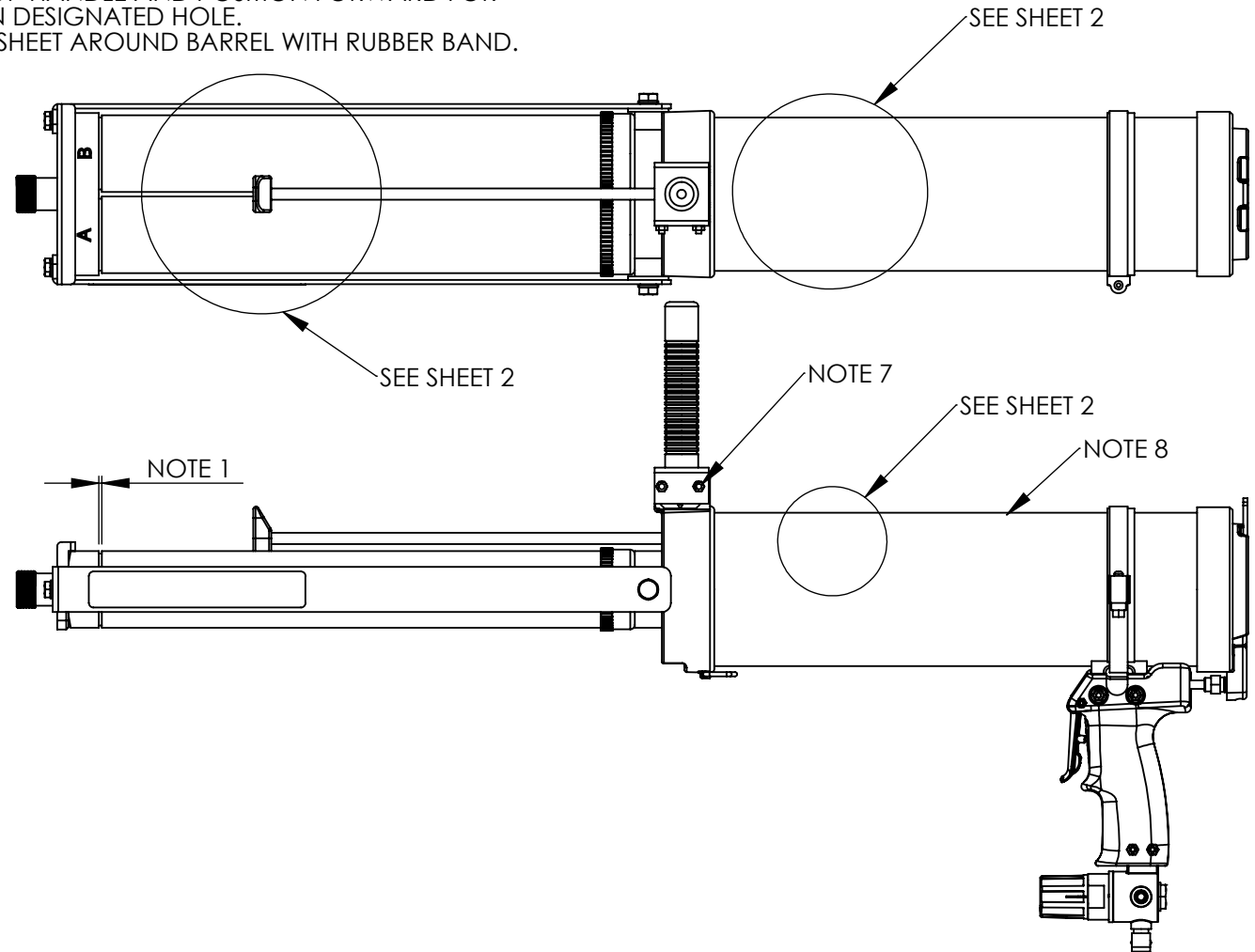



**NOTE:**

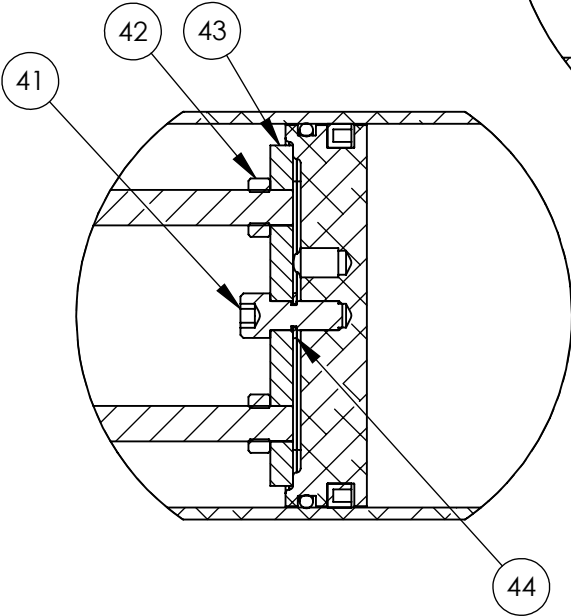
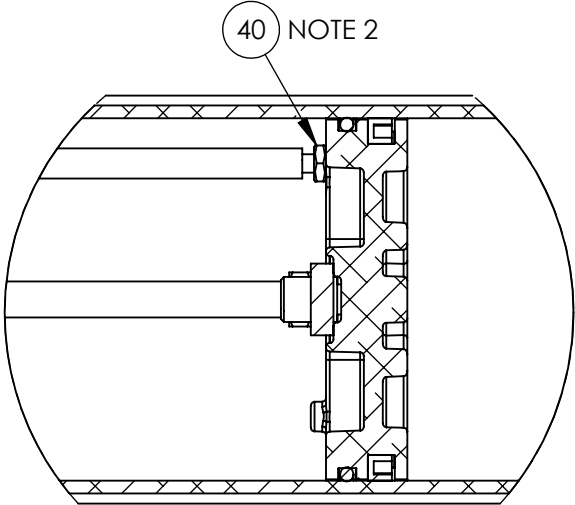
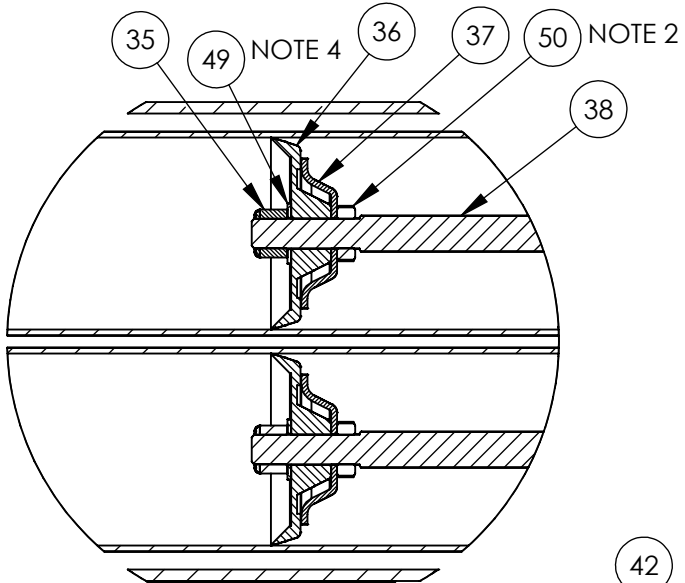
1. WHEN ASSEMBLED THERE SHOULD BE NO MORE THAN A 1/16" GAP BETWEEN THE MANIFOLD AND BARREL END.
2. USE BLUE LOCKTITE IN THESE AREAS.
3. USE GREASE IN THESE AREAS.
4. PACKINGS SHOULD BE EVEN WITH EACH OTHER AND PULL WHEN ASSEMBLED.
5. TURN QUICK DISCONNECT TO SIDE AS SHOWN ON SHEET 5.
6. HANDLE SHOULD NOT TURN, USE GLUE IF NECESSARY.
7. DISSASSEMBLE BACK SCREW OF TOP HANDLE AND POSITION FORWARD FOR SHIPPING. PLACE SCREW BACK IN DESIGNATED HOLE.
8. SECURE (1)501-141 INSTRUCTION SHEET AROUND BARREL WITH RUBBER BAND.

|        |      | REVISIONS          |         |          |
|--------|------|--------------------|---------|----------|
| CN     | REV. | DESCRIPTION        | DATE    | APPROVED |
| DS548  | 1    | PRODUCTION RELEASE | 3/21/11 |          |
| CN1297 | 2    | ADD NOTE 8         | 1/14/13 |          |



|   |  |        |         |  |                                     |          |   |        |      |   |
|---|--|--------|---------|--|-------------------------------------|----------|---|--------|------|---|
| <p><b>PROPRIETARY AND CONFIDENTIAL</b></p> <p>THE INFORMATION CONTAINED IN THIS DRAWING IS THE SOLE PROPERTY OF ALBION ENGINEERING CO. ANY REPRODUCTION IN PART OR AS A WHOLE WITHOUT THE WRITTEN PERMISSION OF ALBION ENGINEERING CO. IS PROHIBITED.</p> | MATERIAL                                 | DATE   | 3/21/11 | DIMENSIONAL TOLERANCES<br>UNLESS OTHERWISE SPECIFIED<br>FRAC. ±1/64" ANG. ±30' DEC. ±.005" | SIZE                                | <b>A</b> |  Albion Engineering Co.<br>1250 N. Church St.<br>Moorestown, NJ. 08057 |        |      |   |
|   | ALBION 447 MATERIAL SPEC. -----          | DRAWN  | BJM     |  | SCALE:1:5                           |          |   |        |      |   |
|   | FINISH SEE INDIVIDUAL COMPONENT DRAWINGS | APP'VD | ORIGIN  | DS548  | GUN, AIR, TWIN SAUSAGE<br>AT1200S-2 |          | DWG. NO.  | 954-21 | REV. | 2 |

| CN     |   | REV. | DESCRIPTION                                  | DATE    | APPROVED |
|--------|---|------|--|---------|----------|
| CN1336 | 1 |      | ADD ITEM 49 - ITEMS 35 & 50 WERE PART #37-12 | 8/20/13 |          |



**PROPRIETARY AND CONFIDENTIAL**

THE INFORMATION CONTAINED IN THIS DRAWING IS THE SOLE PROPERTY OF ALBION ENGINEERING CO. ANY REPRODUCTION IN PART OR AS A WHOLE WITHOUT THE WRITTEN PERMISSION OF ALBION ENGINEERING CO. IS PROHIBITED.

|                           |        |         |
|---------------------------|--------|---------|
| MATERIAL                  | DATE   | 3/21/11 |
| ALBION 447 MATERIAL SPEC. | DRAWN  | BJM     |
| FINISH                    | APP'VD |         |
|                           | ORIGIN | DS548   |

DIMENSIONAL TOLERANCES  
UNLESS OTHERWISE SPECIFIED  
FRAC.  $\pm 1/64"$  ANG.  $\pm 30'$  DEC.  $\pm .005"$

SIZE **A**  
SCALE: 1:2

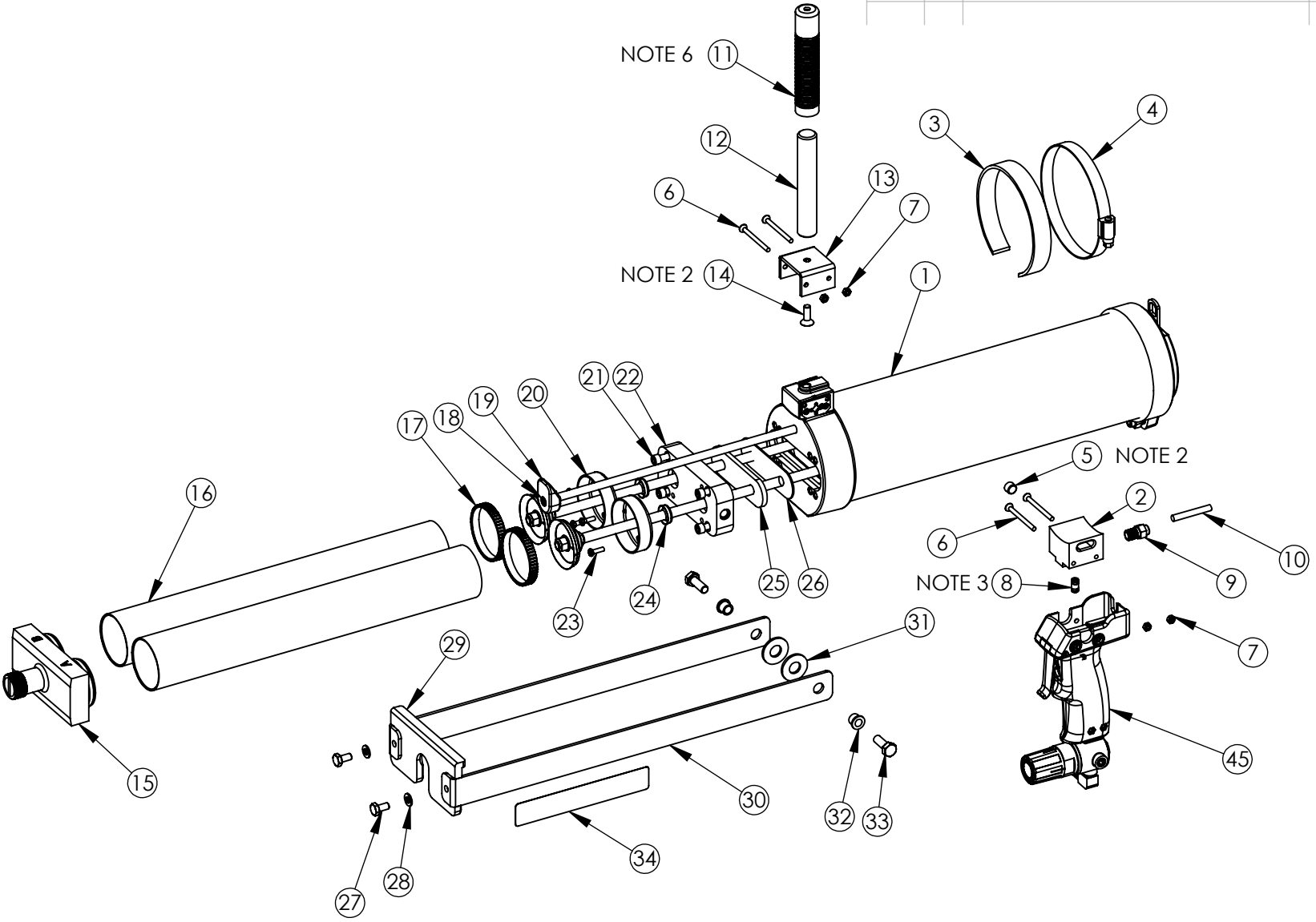
**GUN, AIR, TWIN SAUSAGE  
AT1200S-2**

**Albion** DISPENSING SOLUTIONS

Albion Engineering Co.  
1250 N. Church St.  
Moorestown, NJ. 08057

|          |        |      |   |              |
|----------|--------|------|---|--------------|
| DWG. NO. | 954-21 | REV. | - | SHEET 2 OF 5 |
|----------|--------|------|---|--------------|

| CN |  | REV. | REVISIONS DESCRIPTION | DATE | APPROVED |
|----|--|------|-----------------------|------|----------|
|    |  |      |                       |      |          |



**PROPRIETARY AND CONFIDENTIAL**

THE INFORMATION CONTAINED IN THIS DRAWING IS THE SOLE PROPERTY OF ALBION ENGINEERING CO. ANY REPRODUCTION IN PART OR AS A WHOLE WITHOUT THE WRITTEN PERMISSION OF ALBION ENGINEERING CO. IS PROHIBITED.

|                           |        |         |
|---------------------------|--------|---------|
| MATERIAL                  | DATE   | 3/21/11 |
| ALBION 447 MATERIAL SPEC. | DRAWN  | BJM     |
| FINISH                    | APP'VD |         |
|                           | ORIGIN | DS548   |

DIMENSIONAL TOLERANCES UNLESS OTHERWISE SPECIFIED  
 FRAC. ±1/64" ANG. ±30' DEC. ±.005"

SIZE **A**  
 SCALE: 1:6

**GUN, AIR, TWIN SAUSAGE  
 AT1200S-2**

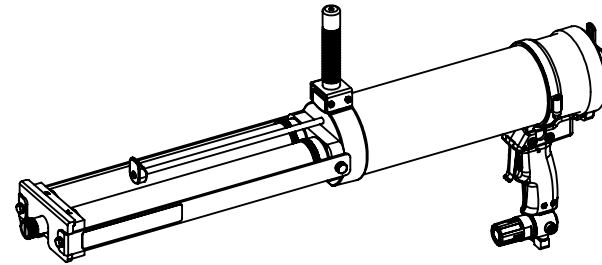
**Albion** DISPENSING SOLUTIONS


Albion Engineering Co.  
 1250 N. Church St.  
 Moorestown, NJ. 08057

DWG. NO. 954-21      REV. -      SHEET 3 OF 5

| ITEM # | PART #  | DDESCRIPTION             | QTY |
|--------|---------|--------------------------|-----|
| 1      | 955-6   | DRIVE ASSEMBLY           | 1   |
| 2      | 972-7   | REAR BRACKET             | 1   |
| 3      | 972-11  | GASKET                   | 1   |
| 4      | 690-5   | HOSE CLAMP               | 1   |
| 5      | 138-22  | 1/8NPT PLUG              | 1   |
| 6      | 10-103  | M4 FLAT HEAD SCREW       | 4   |
| 7      | 37-43   | M4 NUT                   | 4   |
| 8      | 957-5   | UNION TUBE               | 1   |
| 9      | 978-9   | HOSE ADAPTER             | 1   |
| 10     | 994-5   | TUBE                     | 1   |
| 11     | 972-10  | PLASTIC HANDLE           | 1   |
| 12     | 972-9   | ALUMINUM HANDLE          | 1   |
| 13     | 972-8   | FRONT BRACKET            | 1   |
| 14     | 10-118  | 1/4-28 FLAT HEAD SCREW   | 1   |
| 15     | 645-G05 | MANIFOLD                 | 1   |
| 16     | 237-37  | BARREL                   | 2   |
| 17     | 3-5     | LOCKRING                 | 2   |
| 18     | 10-77   | 10-24 FLAT HEAD SCREW    | 1   |
| 19     | 972-3   | PULL, INDICATOR ROD      | 1   |
| 20     | 2-28    | BACK CAP                 | 2   |
| 21     | 10-98   | 1/4-20 SOCKET HEAD SCREW | 4   |
| 22     | 972-1   | BACK PLATE               | 1   |
| 23     | 10-73   | 10-32 HEX HEAD SCREW     | 4   |
| 24     | 534-1   | U-CUP                    | 2   |
| 25     | 972-5   | ROD LOCATOR              | 1   |
| 26     | 972-4   | ROD GASKET               | 1   |
| 27     | 10-57   | 1/4-28 HEX HEAD SCREW    | 2   |
| 28     | 39-110  | WASHER                   | 2   |
| 29     | 606-4   | FRONT PLATE              | 1   |
| 30     | 972-2   | SIDE STRAP               | 2   |
| 31     | 512-17  | BRONZE WASHER            | 2   |
| 32     | 512-18  | PIVOT BEARING            | 2   |
| 33     | 10-97   | 5/16-24 HEX HEAD SCREW   | 2   |
| 34     | 500-597 | LABEL                    | 1   |

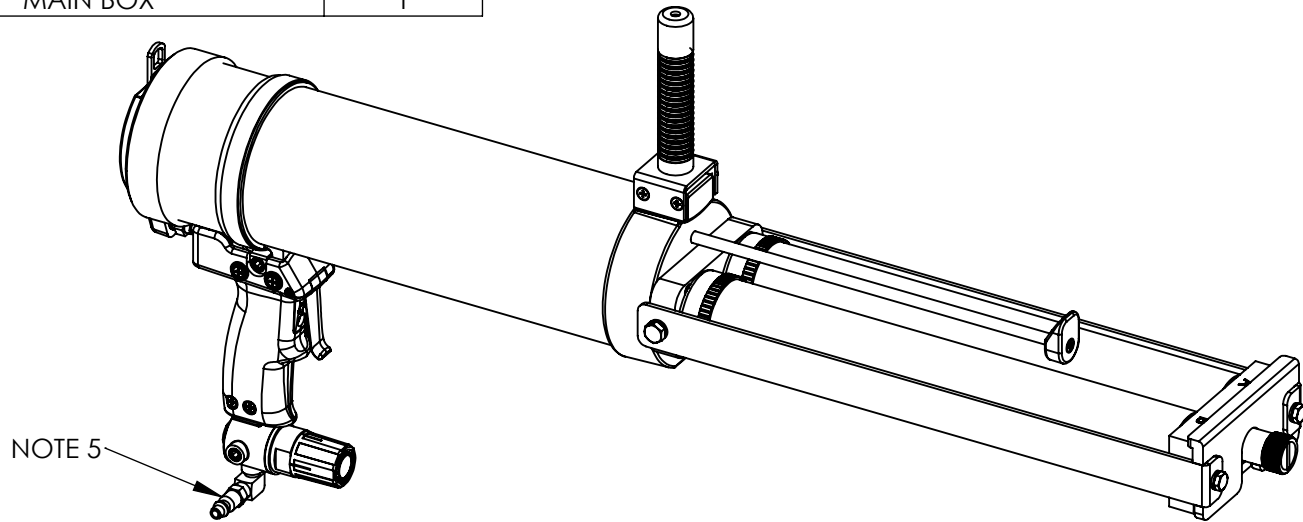
| REVISIONS |      |  |         |          |
|-----------|------|--|---------|----------|
| CN        | REV. | DESCRIPTION  | DATE    | APPROVED |
| CN1291    | 1    | THRED SPEC. FOR 10-97 WAS 1/4-28   | 7/18/12 |          |
| CN1310    | 2    | THREAD SPEC. FOR 10-97 WAS 5/16-18<br>THIS CORRECTION WAS A TYPO NOT AN UPDATE TO PART | 2/6/13  |          |




|  |                           |        |         |  |            |          |  |      |   |
|--|---------------------------|--------|---------|--|------------|----------|--|------|---|
| <b>PROPRIETARY AND CONFIDENTIAL</b><br>THE INFORMATION CONTAINED IN THIS DRAWING IS THE SOLE PROPERTY OF ALBION ENGINEERING CO. ANY REPRODUCTION IN PART OR AS A WHOLE WITHOUT THE WRITTEN PERMISSION OF ALBION ENGINEERING CO. IS PROHIBITED. | MATERIAL                  | DATE   | 3/21/11 | DIMENSIONAL TOLERANCES<br>UNLESS OTHERWISE SPECIFIED<br>FRAC. ±1/64" ANG. ±30' DEC. ±.005" | SIZE       | <b>A</b> |  <b>Albion Engineering Co.</b><br>1250 N. Church St.<br>Moorestown, NJ. 08057 |      |   |
|  | ALBION 447 MATERIAL SPEC. | DRAWN  | BJM     |  | SCALE:1:10 |          |  |      |   |
|  | FINISH                    | APPVD  |         | <b>GUN, AIR, TWIN SAUSAGE</b><br>AT1200S-2   | DWG. NO.   | 954-21   |  | REV. | 2 |
|  |                           | ORIGIN | DS548   |  |            |          |  |      |   |

| ITEM # | PART #  | DESCRIPTION       | QTY |
|--------|---------|-------------------|-----|
| 35     | 37-46   | 5/16-18 NYLOC NUT | 2   |
| 36     | 873-6   | PACKING           | 6   |
| 37     | 873-10  | CONCAVE WASHER    | 2   |
| 38     | 366-59  | PISTON ROD        | 2   |
| 39     | 672-3   | INDICATOR ROD     | 1   |
| 40     | 37-4    | 10-32 NUT         | 1   |
| 41     | 10-112  | CAPTIVE SCREW     | 1   |
| 42     | 37-35   | 3/8-24 JAM NUT    | 2   |
| 43     | 652-4   | ROD RETAINER      | 1   |
| 44     | 978-23  | RETAINER          | 1   |
| 45     | 981-1   | HANDLE ASSEMBLY   | 1   |
| 46     | 501-141 | INSTRUCTIONS      | 2   |
| 47     | 745     | CATALOG           | 1   |
| 48     | 500-519 | BOX LABEL         | 1   |
| 49     | 39-111  | WASHER            | 2   |
| 50     | 37-42   | 5/16-18 JAM NUT   | 2   |
| 51     | 357-55  | MAIN BOX          | 1   |

| REVISIONS |      |  |         |          |
|-----------|------|--|---------|----------|
| CN        | REV. | DESCRIPTION  | DATE    | APPROVED |
| CN1297    | 1    | DELETE (1)500-129 - ADD (2)500-141   | 1/14/13 |          |
| CN1336    | 2    | ITEM 35 WAS 37-12, ITEM 49 WAS 357-14, ITEM 50 WAS 357-15<br>DELETE (4)37-12, (1)357-14 & (1)357-15 - ADD (2)37-42, (2)37-46 & (2)39-111 | 8/20/13 |          |



|  |                           |        |  |  |           |              |  |   |
|--|---------------------------|--------|--|--|-----------|--------------|--|---|
| <b>PROPRIETARY AND CONFIDENTIAL</b><br>THE INFORMATION CONTAINED IN THIS DRAWING IS THE SOLE PROPERTY OF ALBION ENGINEERING CO. ANY REPRODUCTION IN PART OR AS A WHOLE WITHOUT THE WRITTEN PERMISSION OF ALBION ENGINEERING CO. IS PROHIBITED. | MATERIAL                  | DATE   | 3/21/11  | DIMENSIONAL TOLERANCES<br>UNLESS OTHERWISE SPECIFIED<br>FRAC. ±1/64" ANG. ±30' DEC. ±.005" | SIZE      | <b>A</b>     |  <b>Albion Engineering Co.</b><br>1250 N. Church St.<br>Moorestown, NJ. 08057 |   |
|  | ALBION 447 MATERIAL SPEC. | DRAWN  | BJM  |  | SCALE:1:5 |              |  |   |
|  | FINISH                    | APP'VD | <b>GUN, AIR, TWIN SAUSAGE<br/>         AT1200S-2</b> |  | DWG. NO.  | 954-21       | REV.   | 1 |
|  | -----                     | ORIGIN |  |  | DS548     | SHEET 5 OF 5 |  |   |