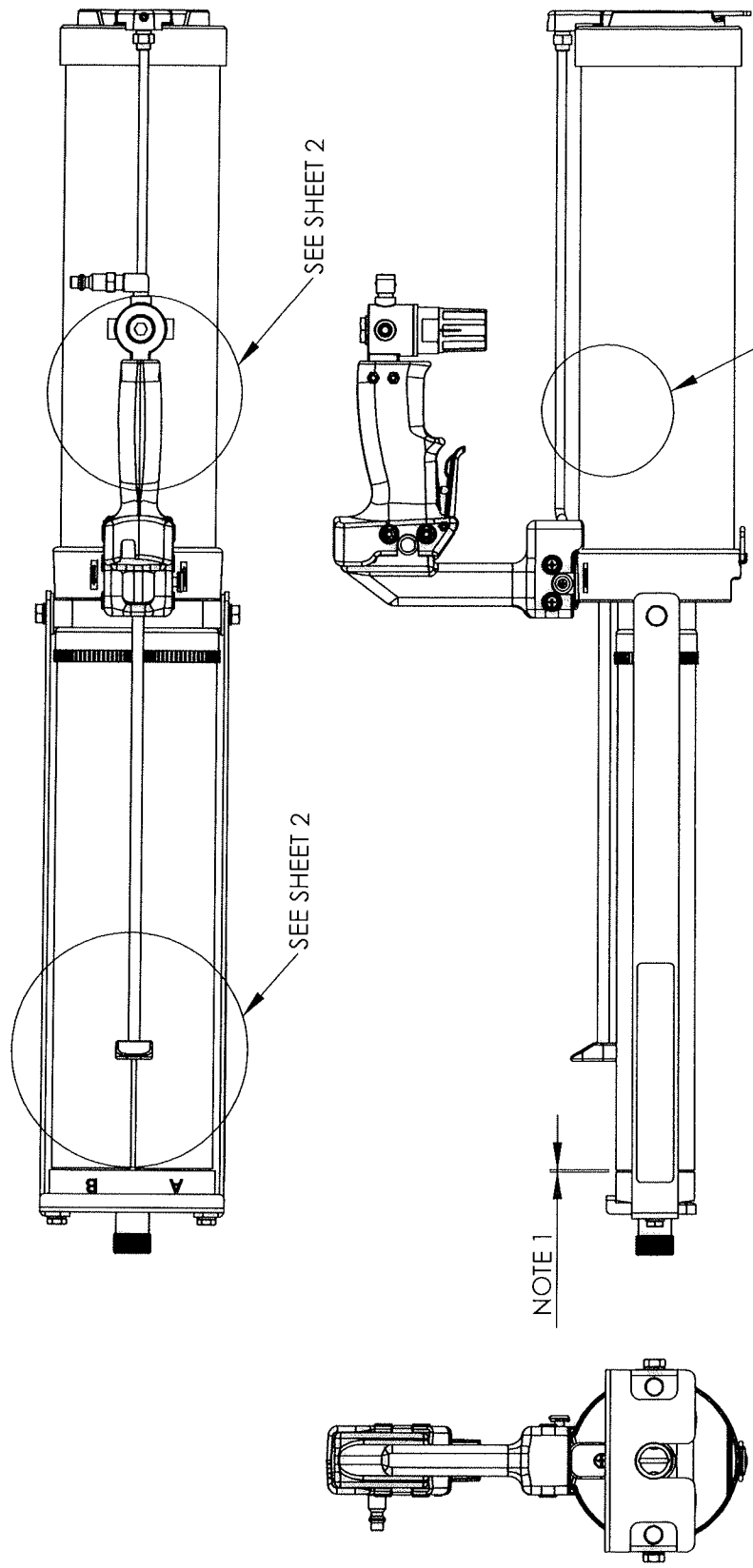


REVISIONS
 DESCRIPTION
 DATE
 APPROVED

CN REV.

NOTE:

1. WHEN ASSEMBLED THERE SHOULD BE NO MORE THAN A 1/16" GAP BETWEEN THE MANIFOLD AND BARREL END.
2. USE BLUE LOCKTITE IN THESE AREAS.
3. USE GREASE IN THESE AREAS.
4. PACKINGS SHOULD BE EVEN WITH EACH OTHER AND PULL WHEN ASSEMBLED.
5. TURN QUICK DISSCONNECT TO SIDE AS SHOWN ON SHEET 5.



PROPRIETARY AND CONFIDENTIAL
 THE INFORMATION CONTAINED IN THIS DRAWING IS THE SOLE PROPERTY OF ALBION ENGINEERING CO. ANY REPRODUCTION IN PART OR AS A WHOLE WITHOUT THE WRITTEN PERMISSION OF ALBION ENGINEERING CO. IS PROHIBITED.

MATERIAL
 ALBION 447 MATERIAL SPEC.
 FINISH

DATE 3/22/11
 DRAWN BJM
 APP'D *[Signature]*
 ORIGIN DS548

DIMENSIONAL TOLERANCES UNLESS OTHERWISE SPECIFIED
 FRAC: ±1/64" ANG: ±30' DEC: ±.005"

SIZE **A**
 SCALE: 1:5

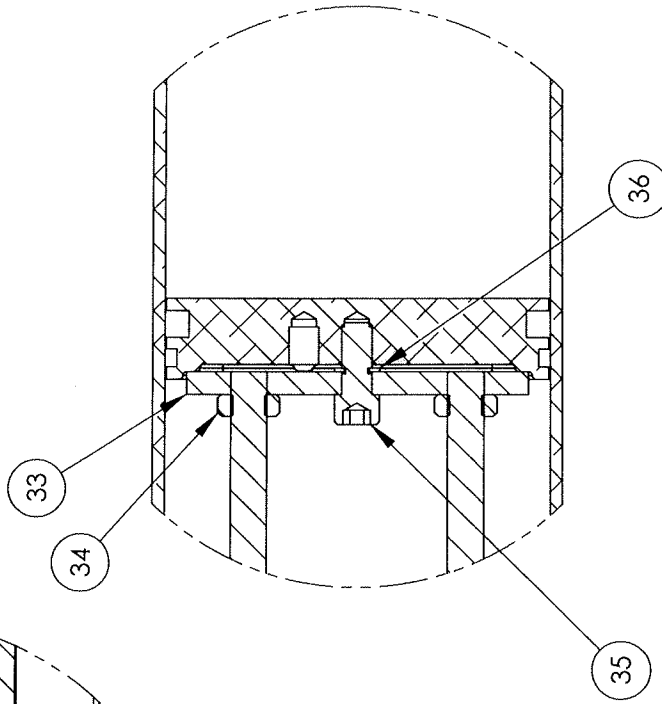
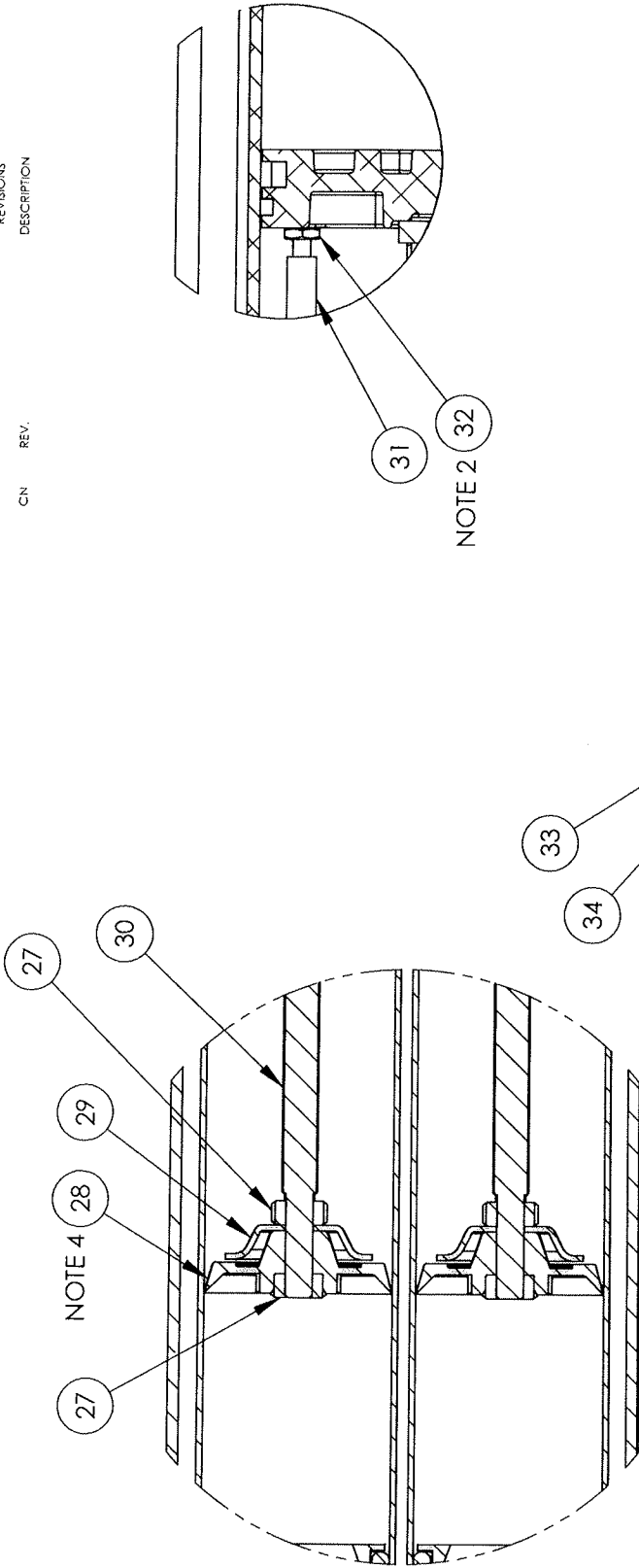
Albion
 DISPENSING SOLUTIONS
 Albion Engineering Co.
 1250 N. Church St.
 Moorestown, NJ. 08057

GUN, AIR, TWIN SAUSAGE
 AT1200S

DWG. NO. 954-9
 REV. 1
 SHEET 1 OF 5



| REVISIONS | DATE | APPROVED |
|-----------|------|----------|
| CN | REV. | |



NOTE 2

NOTE 4

Albion DISPENSING SOLUTIONS
 Albion Engineering Co.
 1250 N. Church St.
 Moorestown, NJ. 08057

DWG. NO. 954-9
 REV. 1 SHEET 2 OF 5

DATE 3/22/11
 DRAWN BJM
 APP'D *[Signature]*
 ORIGIN DS548

SIZE A
 SCALE: 1:2

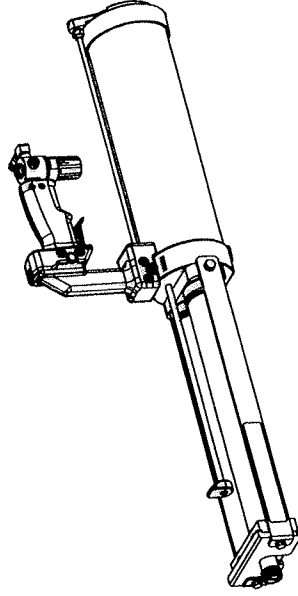
DIMENSIONAL TOLERANCES
 UNLESS OTHERWISE SPECIFIED
 FRAC. ±1/64" ANG. ±30' DEC. ±.005"

GUN, AIR, TWIN SAUSAGE
 AT1200S

MATERIAL ALBION 447 MATERIAL SPEC.
 FINISH

PROPRIETARY AND CONFIDENTIAL
 THE INFORMATION CONTAINED IN THIS
 DRAWING IS THE SOLE PROPERTY OF
 ALBION ENGINEERING CO. ANY
 REPRODUCTION IN PART OR AS A WHOLE
 WITHOUT THE WRITTEN PERMISSION OF
 ALBION ENGINEERING CO. IS
 PROHIBITED.

| ITEM # | PART # | DESCRIPTION | QTY |
|--------|---------|--------------------------|-----|
| 1 | 955-7 | DRIVE ASSEMBLY | 1 |
| 2 | 972-4 | ROD GASKET | 1 |
| 3 | 972-5 | ROD LOCATOR | 1 |
| 4 | 972-1 | BACK PLATE | 1 |
| 5 | 10-98 | 1/4-20 SOCKET HEAD SCREW | 4 |
| 6 | 534-1 | U-CUP | 2 |
| 7 | 2-28 | BACK CAP | 2 |
| 8 | 10-73 | 10-32 HEX HEAD SCREW | 4 |
| 9 | 972-3 | PULL, INDICATOR ROD | 1 |
| 10 | 645-G05 | MANIFOLD | 1 |
| 11 | 237-37 | BARREL | 2 |
| 12 | 3-5 | LOCKRING | 2 |
| 13 | 10-77 | 10-24 FLAT HEAD SCREW | 1 |
| 14 | 10-57 | 1/4-28 HEX HEAD SCREW | 2 |
| 15 | 39-110 | WASHER | 2 |
| 16 | 606-4 | FRONT PLATE | 1 |
| 17 | 500-538 | LABEL | 1 |
| 18 | 972-2 | SIDE STRAP | 2 |
| 19 | 512-18 | PIVOT BEARING | 2 |
| 20 | 10-97 | 1/4-28 HEX HEAD SCREW | 2 |
| 21 | 512-17 | BRONZE WASHER | 2 |
| 22 | 10-103 | M4 FLAT HEAD SCREW | 4 |
| 23 | 978-62 | SUITCASE HANDLE | 1 |
| 24 | 37-43 | M4 NUT | 4 |
| 25 | 957-5 | UNION TUBE | 2 |
| 26 | 981-1 | HANDLE ASSEMBLY | 1 |
| 27 | 37-12 | 5/16-18 NUT | 4 |
| 28 | 873-6 | PACKING | 6 |
| 29 | 873-10 | CONCAVE WASHER | 2 |
| 30 | 366-59 | PISTON ROD | 2 |
| 31 | 672-3 | INDICATOR ROD | 1 |
| 32 | 37-4 | 10-32 NUT | 1 |
| 33 | 652-4 | ROD RETAINER | 1 |
| 34 | 37-35 | 38-24 JAM NUT | 2 |



Albion
 DISPENSING SOLUTIONS
 Albion Engineering Co.
 1250 N. Church St.
 Moorestown, NJ. 08057

DWG. NO. 954-9
 REV. SHEET 4 OF 5

DIMENSIONAL TOLERANCES
 UNLESS OTHERWISE SPECIFIED
 FRA.C. ±1/64" ANG. ±30' DEC. ±.005"

DATE 3/22/11
 DRAWN BJM
 APP'D *JBH*
 ORIGIN DS548

PROPRIETARY AND CONFIDENTIAL
 THE INFORMATION CONTAINED IN THIS
 DRAWING IS THE SOLE PROPERTY OF
 ALBION ENGINEERING CO. ANY
 REPRODUCTION IN PART OR AS A WHOLE
 WITHOUT THE WRITTEN PERMISSION OF
 ALBION ENGINEERING CO. IS
 PROHIBITED.

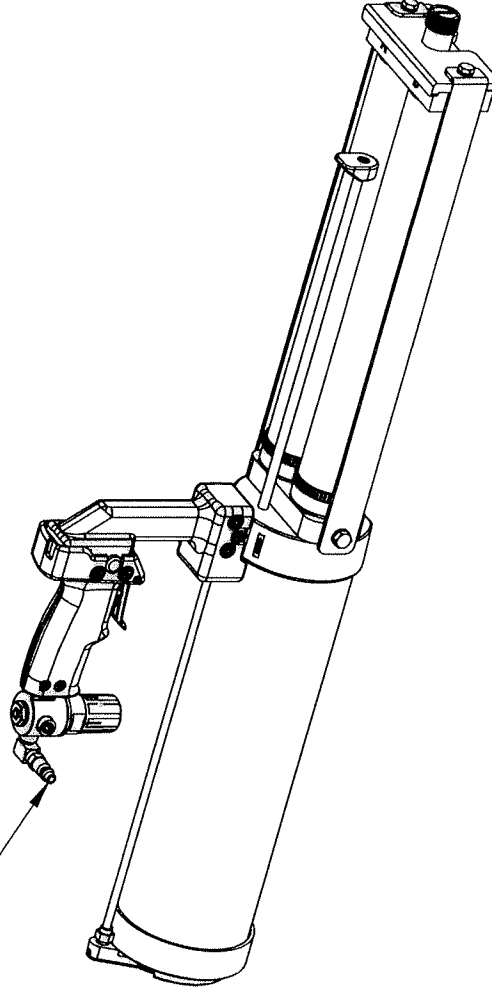
SIZE **A**
 SCALE: 1:10
 GUN, AIR, TWIN SAUSAGE
 AT1200S

| ITEM # | PART # | DESCRIPTION | QTY |
|--------|---------|---------------|-----|
| 35 | 10-112 | CAPTIVE SCREW | 1 |
| 36 | 978-23 | RETAINER | 1 |
| 37 | 501-129 | INSTRUCTIONS | 1 |
| 38 | 745 | CATALOG | 1 |
| 39 | 500-519 | BOX LABEL | 1 |
| 40 | 357-14 | BOX | 2 |
| 41 | 357-15 | BOX | 1 |
| 42 | 357-55 | MAIN BOX | 1 |

REVISIONS
DESCRIPTION

CN REV. DATE APPROVED

NOTE 5



Albion
DISPENSING SOLUTIONS

Albion Engineering Co.
1250 N. Church St.
Moorestown, NJ. 08057

DWG. NO. 954-9 REV. 1 SHEET 5 OF 5

SIZE **A**
SCALE: 1:6

DIMENSIONAL TOLERANCES
UNLESS OTHERWISE SPECIFIED
FRAC. ± 1/64" ANG. ± 30' DEC. ± .005"

DATE 3/22/11
DRAWN BJM
APPROVED *GBA*
ORIGIN DS548

MATERIAL
ALBION 447 MATERIAL SPEC.
FINISH

PROPRIETARY AND CONFIDENTIAL
THE INFORMATION CONTAINED IN THIS DRAWING IS THE SOLE PROPERTY OF ALBION ENGINEERING CO. ANY REPRODUCTION IN PART OR AS A WHOLE WITHOUT THE WRITTEN PERMISSION OF ALBION ENGINEERING CO. IS PROHIBITED.

GUN, AIR, TWIN SAUSAGE
AT1200S