

MULTI-COMPONENT cartridge air guns

Bulletin 318A

One-Hand Control (Suitcase Configuration)

Easy, Accurate, and More Comfortable!

Proven Snap-in Cartridge

Ergonomic Truck Bed Spraying

Easy to Control Tool with One Hand

Suitcase Adapter for Wall & Floor
Makes Applying Material Easy

Suitcase configuration requires purchase of 957-2 Adapter

Upright Position for Simple Load & Reload

Two-Hand Control (Standard Configuration)

Two-Hand Operation with Improved Control

All Pneumatic Forward & Reverse

Pivot Bolt Means More Comfort

Easy Access Regulator with Quick Disconnect

Introducing the Radically New Patented Multi-Component Cartridge Dispensing Tools from Albion.

The Ergonomic AT Line Easily Converts from One Hand to Two Hand Operation.

Compare the versatility of the AT Line of features with any other gun:

Ergonomic design— one hand or two-hand operation with improved control, means easier and more comfortable material dispensing.

More power— faster flow increases productivity.

Responsive— improved trigger control, easy access regulator, and pneumatic forward and reverse.

Adaptable— both tools quickly change over from one-hand to two-hand configurations and feature spray connections.

Easy reload— truly functional upright position allows easy load and unload.

Rugged construction— Albion's legendary quality and state-of-the-art engineering insures that the tool can handle rugged conditions.

Only the AT Line Offers Two Designs in One Tool



The AT Line easily adapts from a two-hand set-up (Standard Configuration) to a one-hand set-up (Suitcase Configuration). Ergonomic design makes dispensing material easy and more comfortable.



ALBION Engineering Co.
1250 N. Church Street
Moorestown, NJ 08057-1102
856-235-6688

www.albioneng.com

FAX TOLL-FREE: 800-841-7132
(USA, Canada, Puerto Rico
& US Virgin Islands)

INTERNATIONAL FAX: 01-856-235-9460
E-MAIL: service@albioneng.com

MULTI-COMPONENT cartridge air guns

- All Albion AT-Line guns are available with Suitcase handles (add “-S” to the tool number) and rigid plastic carry cases (add “C” to the tool number).
- All tools easily change to one-handed operation with optional p/n 957-2 Suitcase Handle Adapter.



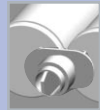
AT400 Series

Features:

- The AT400 accepts 1:1 or 2:1 cartridges with **no** change over parts required

Tools in this Series:

- AT400-SC
- AT400-S
- AT400C
- AT400
- AT400X4-SC
- AT400X4-S
- AT400X4C
- AT400X4
- AT400X10-S
- AT400X10
- AT400X10C
- AT400X10



400 Cartridge	400 Cartridge	400 Cartridge	400 Cartridge	400 Cartridge
Cartridge Ratio:	1:1	2:1	4:1	10:1
Outside Diameters:	1 ³ / ₄ x 1 ³ / ₄	2 ¹ / ₁₆ x 1 ¹⁵ / ₃₂	1 ¹⁵ / ₁₆ x 1 ³¹ / ₃₂	2 ⁹ / ₃₂ x 2 ³ / ₃₂



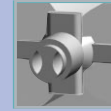
AT600 Series

Features:

- All 600 Series tools accept 1:1 or 2:1 cartridges (741-G02/741-G03) (change over parts included)

Tools in this Series:

- AT600-SC
- AT600-S
- AT600C
- AT600
- AT600X2-SC
- AT600X2-S
- AT600X2C
- AT600X2



Cartridge Ratio:	1:1	2:1
	Volume:	300/300ml (22oz)
Outside Diameters:	2 x 2	2 x 1 ¹⁵ / ₃₂
Cartridge Part Number:	Cartridge "A"	741-G02
	Cartridge "B"	741-G02
	Cartridge "B"	741-G03



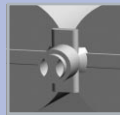
AT1500 Series

Features:

- All 1500 Series tools accept 1:1 cartridges
- AT1500X has a top load carriage
- AT1500 has a lighter and more rigid side-load carriage (easier suitcase change over)

Tools in this Series:

- AT1500-SC
- AT1500-S
- AT1500C
- AT1500
- AT1500X-SC
- AT1500X-S
- AT1500XC
- AT1500X



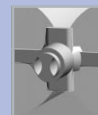
1500X Cartridge	1500X Cartridge
Cartridge Ratio:	1:1
Volume:	750/750ml (51oz)
Outside Diameters:	3 ¹ / ₈ x 3 ¹ / ₈
Cartridge Part Number:	Cartridge "A"
	Cartridge "B"
	Cartridge "B"



AT825, AT900 & AT1000

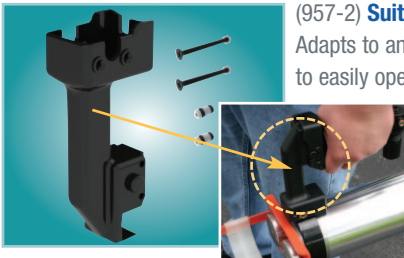
Tools in this Series:

- AT825-SC
- AT825-S
- AT825C
- AT825
- AT900-SC
- AT900-S
- AT900C
- AT900
- AT1000-SC
- AT1000-S
- AT1000C
- AT1000



Cartridge Ratio:	10:1	3:1	2:1
	Volume:	825ml	1000ml
Outside Diameters:	750/75ml (26oz)	750/250ml	600/300ml (30.5oz)
Cartridge Part Number:	Cartridge "A"	741-G01	741-G07
	Cartridge "B"	741-G05	741-G02
	Cartridge "B"		2 ¹⁵ / ₁₆ x 2

Replacement Parts



(957-2) Suitcase Handle Adapter

Adapts to any AT series air gun. Allows the user to easily operate the gun with one hand. Makes dispensing to wall and floor applications easier. Includes two unions and hardware for assembly.



(957-11) Handle Assembly AT1500

(957-12) Handle Assembly AT825, AT900, AT1000

(957-13) Handle Assembly AT400, AT600

Quick and easy assembly to air gun. Built-in adjustable regulator has line pressure fitting for use with spray applications. Includes two unions and hardware for assembly.

Protect Your Investment

AT-Line Carrying Case

Protect your investment in a professional quality tool with a hard, durable and convenient plastic carrying case. With a full length hinge and steel latches it will protect your air gun from damage. When ordering with a gun add the suffix C to any part number. To order separately specify part number 1001-1.

