

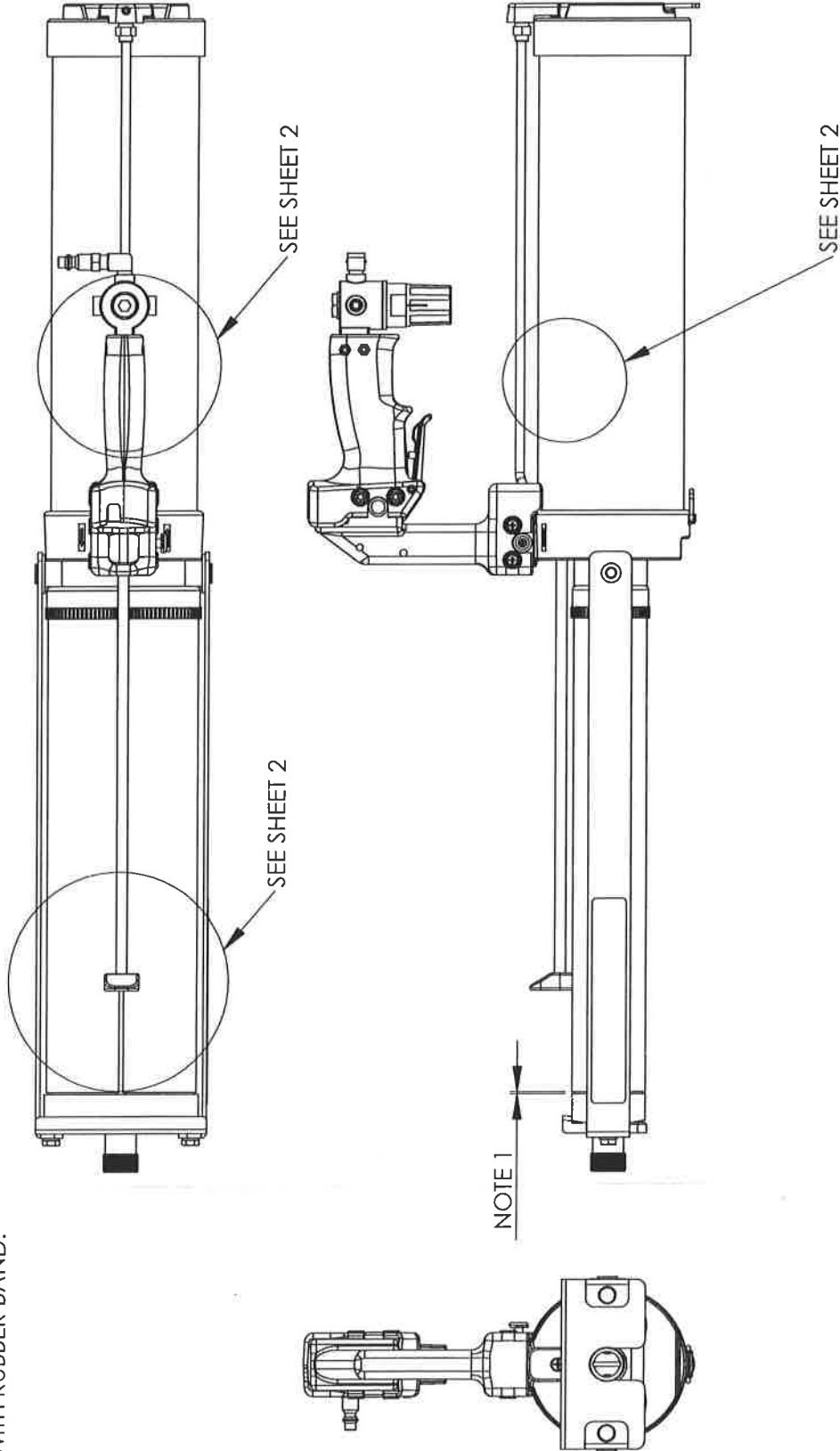
REVISIONS  
 DESCRIPTION  
 ADD NOTE 6

CN REV.  
 CN1297 1

DATE APPROVED  
 1/14/13

**NOTE:**

1. WHEN ASSEMBLED THERE SHOULD BE NO MORE THAN A 1/16" GAP BETWEEN THE MANIFOLD AND BARREL END.
2. USE BLUE LOCKTITE IN THESE AREAS.
3. USE GREASE IN THESE AREAS.
4. PACKINGS SHOULD BE EVEN WITH EACH OTHER AND PULL WHEN ASSEMBLED.
5. TURN QUICK DISCONNECT TO SIDE AS SHOWN ON SHEET 5.
6. SECURE (1) 501-141 INSTRUCTION SHEET AROUND BARREL WITH RUBBER BAND.



**PROPRIETARY AND CONFIDENTIAL**  
 THE INFORMATION CONTAINED IN THIS DRAWING IS THE SOLE PROPERTY OF ALBION ENGINEERING CO. ANY REPRODUCTION IN PART OR AS A WHOLE WITHOUT THE WRITTEN PERMISSION OF ALBION ENGINEERING CO. IS PROHIBITED.

**Albion**  
 DISTRIBUTION SOLUTIONS  
 Albion Engineering Co.  
 1250 N. Church St.  
 Moorestown, NJ. 08057

DWG. NO. 954-9  
 REV. 1 SHEET 1 OF 5

DATE 3/22/11  
 DRAWN BJM  
 APP'D GBA  
 ORIGIN DS548

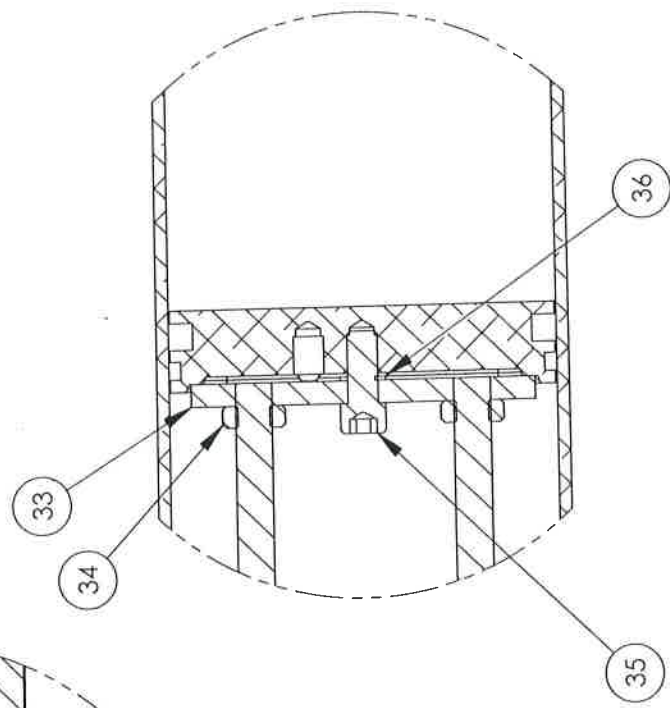
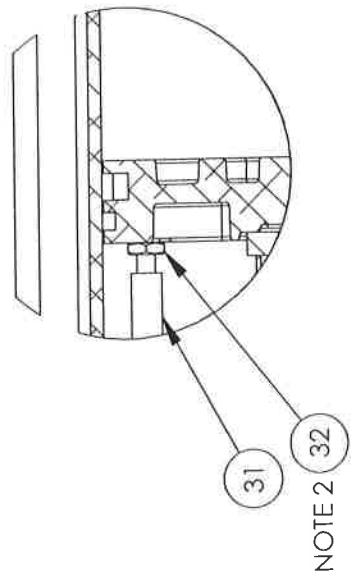
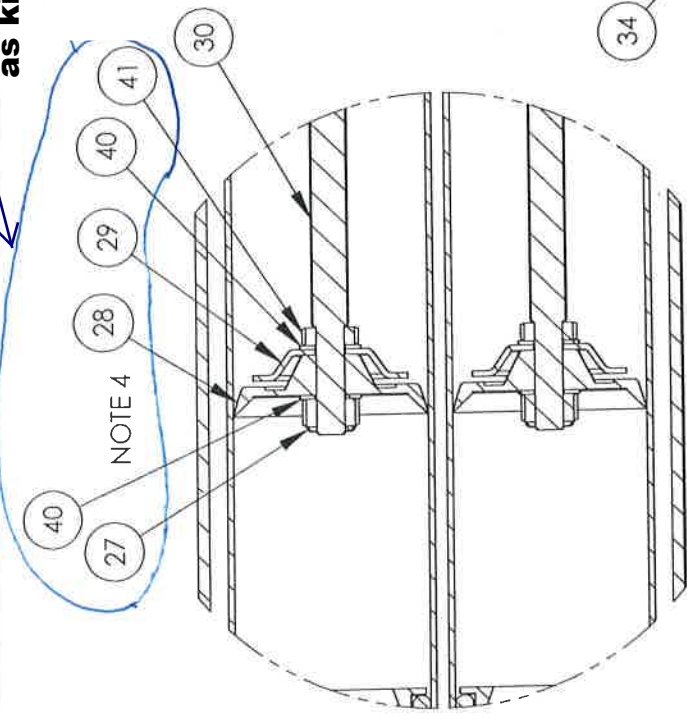
MATERIAL ALBION 447 MATERIAL SPEC.  
 FINISH

DIMENSIONAL TOLERANCES UNLESS OTHERWISE SPECIFIED  
 FRACTION: ±1/64" ANG. ±30' DEC. ±.005"

SIZE A  
 SCALE: 1:1.5

GUN, AIR, TWIN SAUSAGE  
 AT1200S

Also available  
as kit #957-30



REVISIONS		DATE	APPROVED
CH	REV.		
CNI336	1	8/21/13	
CNI443	2	6/15/15	
DESCRIPTION			
ADD ITEM 40 ITEMS 27 & 41 WERE PART #37-12			
ADD (2) 39-111			

**Albion**  
DISPENSING SOLUTIONS

Albion Engineering Co.  
1250 N. Church St.  
Moorestown, NJ. 08057

DWG. NO. 954-9  
REV. 2  
SHEET 2 OF 5

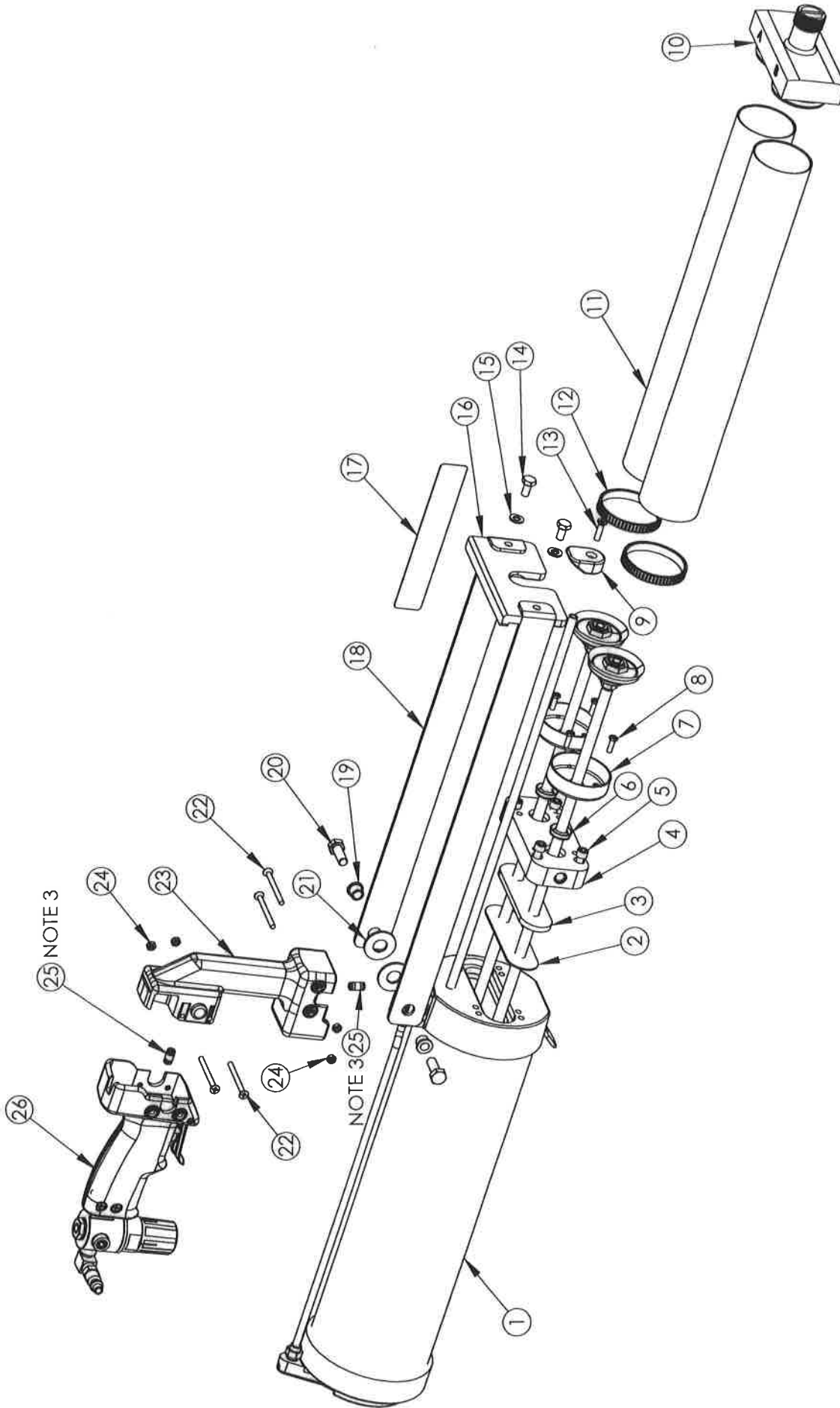
MATERIAL	DATE	3/22/11	SCALE	A
	DRAWN	BJM	DIMENSIONAL TOLERANCES UNLESS OTHERWISE SPECIFIED	SCALE: 1:2
ALBION 447 MATERIAL SPEC.	APPROVD	<i>[Signature]</i>	FRAC. ± 1/64" ANG. ± 30' DEC. ± .005"	
FINISH	ORIGIN	DS548	GUN, AIR, TWIN SAUSAGE AT1200S	

PROPRIETARY AND CONFIDENTIAL  
THE INFORMATION CONTAINED IN THIS DRAWING IS THE SOLE PROPERTY OF ALBION ENGINEERING CO. ANY REPRODUCTION IN PART OR AS A WHOLE WITHOUT THE WRITTEN PERMISSION OF ALBION ENGINEERING CO. IS PROHIBITED.

REVISIONS  
DESCRIPTION

CN REV.

DATE APPROVED



NOTE 3

NOTE 3

**Albion**  
DISPENSING SOLUTIONS

Albion Engineering Co.  
1250 N. Church St.  
Moorestown, NJ. 08057

SIZE **A**

DIMENSIONAL TOLERANCES  
UNLESS OTHERWISE SPECIFIED  
FRA C. ± 1/64" ANG. ± 30' DEC. ± .005"

DATE 3/22/11  
DRAWN BJM

MATERIAL  
ALBION 447 MATERIAL SPEC.

**PROPRIETARY AND CONFIDENTIAL**

THE INFORMATION CONTAINED IN THIS DRAWING IS THE SOLE PROPERTY OF ALBION ENGINEERING CO. ANY REPRODUCTION IN PART OR AS A WHOLE WITHOUT THE WRITTEN PERMISSION OF ALBION ENGINEERING CO. IS PROHIBITED.

GUN, AIR, TWIN SAUSAGE  
AT1200S

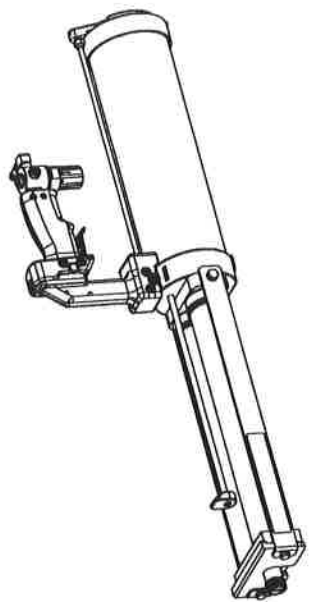
APPVD [Signature]  
ORIGIN DS548

DWG. NO. 954-9

REV. SHEET 3 OF 5

CN	REV.	DESCRIPTION	DATE	APPROVED
CN1291	1	THREAD SPEC. FOR 10-97 WAS 1/4-28	7/18/12	
CN1310	2	THIS CORRECTION WAS A TYPO NOT AN UPDATE TO PART	2/6/13	

ITEM #	PART #	DESCRIPTION	QTY
1	955-7	DRIVE ASSEMBLY	1
2	972-4	ROD GASKET	1
3	972-5	ROD LOCATOR	1
4	972-1	BACK PLATE	1
5	10-98	1/4-20 SOCKET HEAD SCREW	4
6	534-1	U-CUP	2
7	2-28	BACK CAP	2
8	10-73	10-32 HEX HEAD SCREW	4
9	972-3	PULL, INDICATOR ROD	1
10	645-G05	MANIFOLD	1
11	237-37	BARREL	2
12	3-5	LOCKRING	2
13	10-77	10-24 FLAT HEAD SCREW	1
14	10-57	1/4-28 HEX HEAD SCREW	2
15	39-110	WASHER	2
16	606-4	FRONT PLATE	1
17	500-538	LABEL	1
18	972-2	SIDE STRAP	2
19	512-18	PIVOT BEARING	2
20	10-97	5/16-24 HEX HEAD SCREW	2
21	512-17	BRONZE WASHER	2
22	10-103	M4 FLAT HEAD SCREW	4
23	978-62	SUITCASE HANDLE	1
24	37-43	M4 NUT	4
25	957-5	UNION TUBE	2
26	981-1	HANDLE ASSEMBLY	1
27	37-12	5/16-18 NUT	4
28	873-6	PACKING	6
29	873-10	CONCAVE WASHER	2
30	366-59	PISTON ROD	2
31	672-3	INDICATOR ROD	1
32	37-4	10-32 NUT	1
33	652-4	ROD RETAINER	1
34	37-35	38-24 JAM NUT	2



<b>PROPRIETARY AND CONFIDENTIAL</b> THE INFORMATION CONTAINED IN THIS DRAWING IS THE SOLE PROPERTY OF ALBION ENGINEERING CO. ANY REPRODUCTION IN PART OR AS A WHOLE WITHOUT THE WRITTEN PERMISSION OF ALBION ENGINEERING CO. IS PROHIBITED.	MATERIAL	DATE	3/22/11	SEE	A
	ALBION 447 MATERIAL SPEC. FINISH	DRAWN	BJM	DIMENSIONAL TOLERANCES UNLESS OTHERWISE SPECIFIED FRAC. ± 1/64" ANG. ± 30' DEC. ± .005"	SCALE: 1:10
	APPROVED	ORIGIN	DS548	<b>GUN, AIR, TWIN SAUSAGE</b> <b>AT1200S</b>	
				DWG. NO.	954-9
				REV.	2
					SHEET 4 OF 5

**Albion**  
DISPENSING SOLUTIONS

Albion Engineering Co.  
1250 N. Church St.  
Moorestown, NJ. 08057

