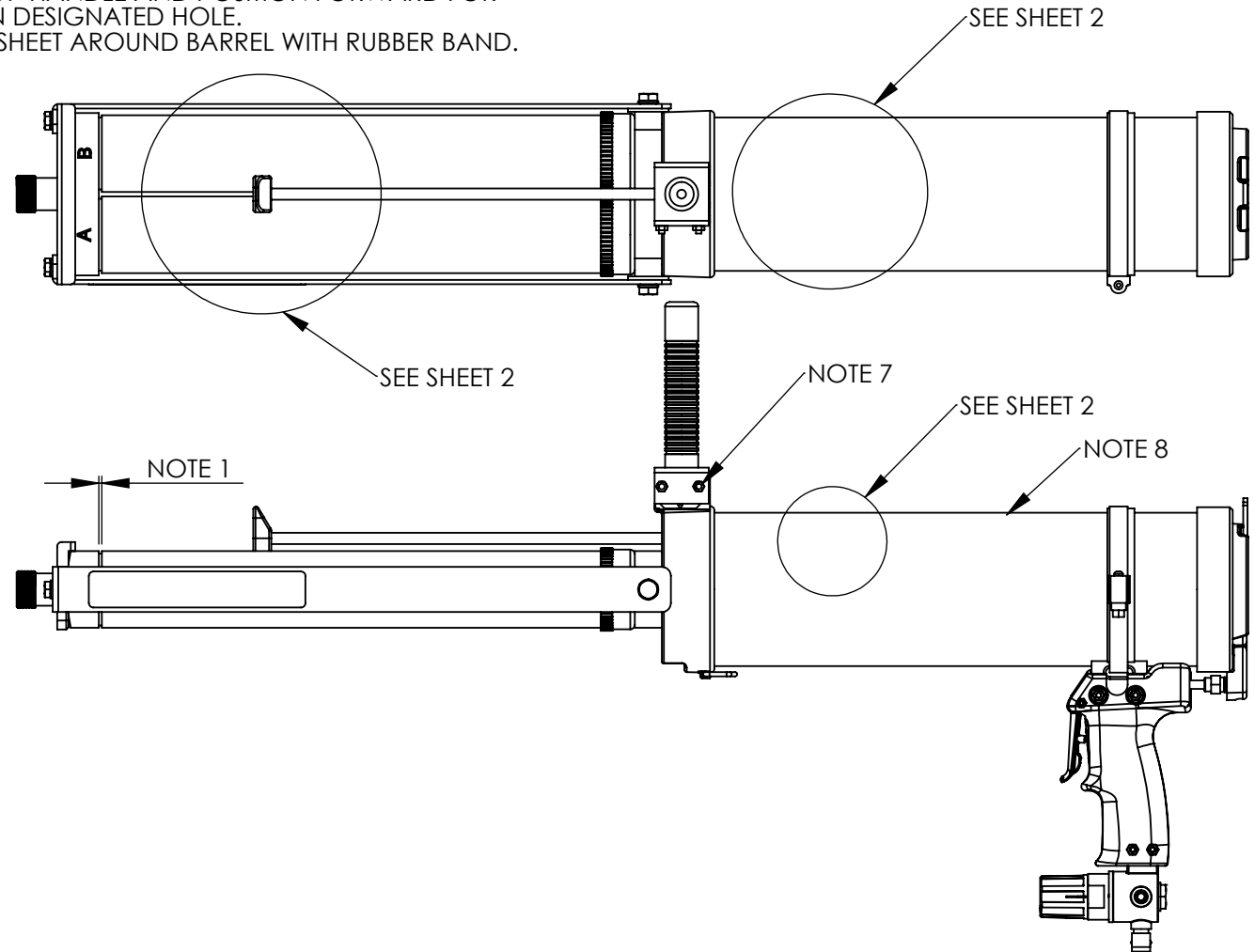



NOTE:

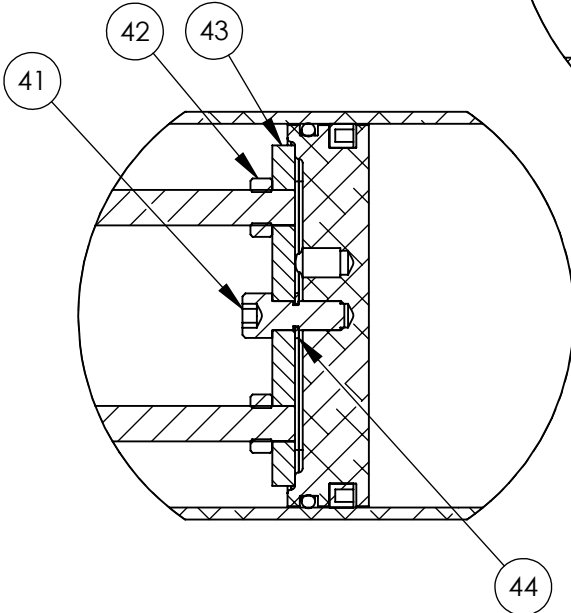
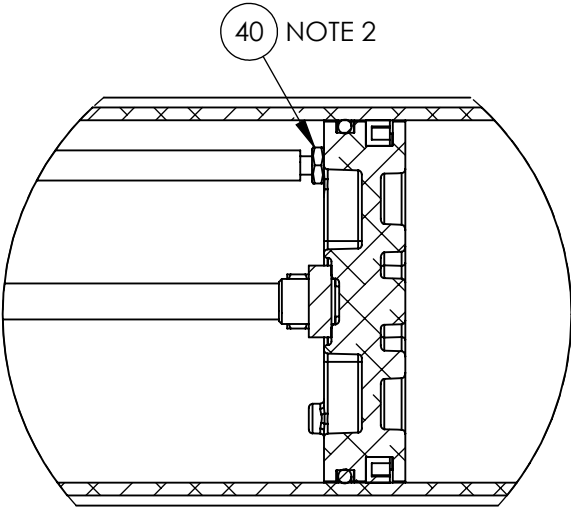
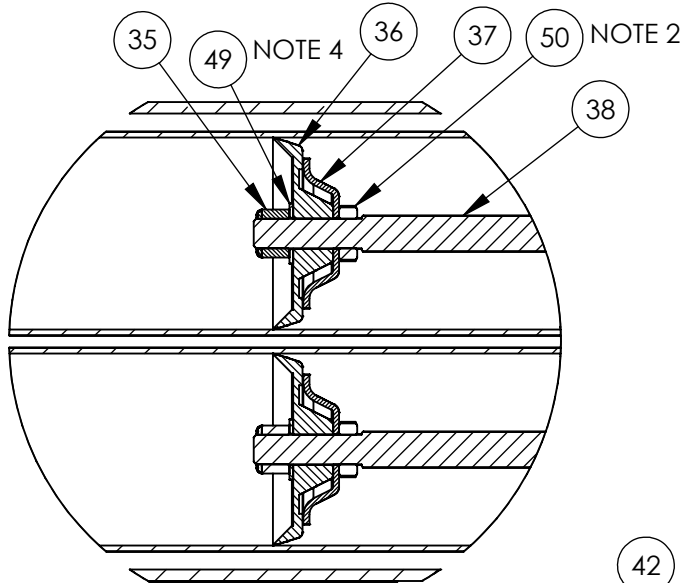
1. WHEN ASSEMBLED THERE SHOULD BE NO MORE THAN A 1/16" GAP BETWEEN THE MANIFOLD AND BARREL END.
2. USE BLUE LOCKTITE IN THESE AREAS.
3. USE GREASE IN THESE AREAS.
4. PACKINGS SHOULD BE EVEN WITH EACH OTHER AND PULL WHEN ASSEMBLED.
5. TURN QUICK DISCONNECT TO SIDE AS SHOWN ON SHEET 5.
6. HANDLE SHOULD NOT TURN, USE GLUE IF NECESSARY.
7. DISSASSEMBLE BACK SCREW OF TOP HANDLE AND POSITION FORWARD FOR SHIPPING. PLACE SCREW BACK IN DESIGNATED HOLE.
8. SECURE (1)501-141 INSTRUCTION SHEET AROUND BARREL WITH RUBBER BAND.

		REVISIONS			
CN	REV.	DESCRIPTION	DATE	APPROVED	
DS548	1	PRODUCTION RELEASE	3/21/11		
CN1297	2	ADD NOTE 8	1/14/13		



<p>PROPRIETARY AND CONFIDENTIAL</p> <p>THE INFORMATION CONTAINED IN THIS DRAWING IS THE SOLE PROPERTY OF ALBION ENGINEERING CO. ANY REPRODUCTION IN PART OR AS A WHOLE WITHOUT THE WRITTEN PERMISSION OF ALBION ENGINEERING CO. IS PROHIBITED.</p>	MATERIAL	DATE	3/21/11	DIMENSIONAL TOLERANCES UNLESS OTHERWISE SPECIFIED FRAC. ±1/64" ANG. ±30' DEC. ±.005"	SIZE	A	 Albion Engineering Co. 1250 N. Church St. Moorestown, NJ. 08057			
	ALBION 447 MATERIAL SPEC. ----	DRAWN	BJM		SCALE:1:5					
	FINISH SEE INDIVIDUAL COMPONENT DRAWINGS	APP'VD	ORIGIN	DS548	GUN, AIR, TWIN SAUSAGE AT1200S-2		DWG. NO.	954-21	REV.	2

CN		REV.	DESCRIPTION	DATE	APPROVED
CN1336	1		ADD ITEM 49 - ITEMS 35 & 50 WERE PART #37-12	8/20/13	



PROPRIETARY AND CONFIDENTIAL

THE INFORMATION CONTAINED IN THIS DRAWING IS THE SOLE PROPERTY OF ALBION ENGINEERING CO. ANY REPRODUCTION IN PART OR AS A WHOLE WITHOUT THE WRITTEN PERMISSION OF ALBION ENGINEERING CO. IS PROHIBITED.

MATERIAL	DATE	3/21/11
ALBION 447 MATERIAL SPEC.	DRAWN	BJM
FINISH	APP'VD	
	ORIGIN	DS548

DIMENSIONAL TOLERANCES UNLESS OTHERWISE SPECIFIED
 FRAC. $\pm 1/64"$ ANG. $\pm 30'$ DEC. $\pm .005"$

SIZE **A**
 SCALE: 1:2

**GUN, AIR, TWIN SAUSAGE
 AT1200S-2**

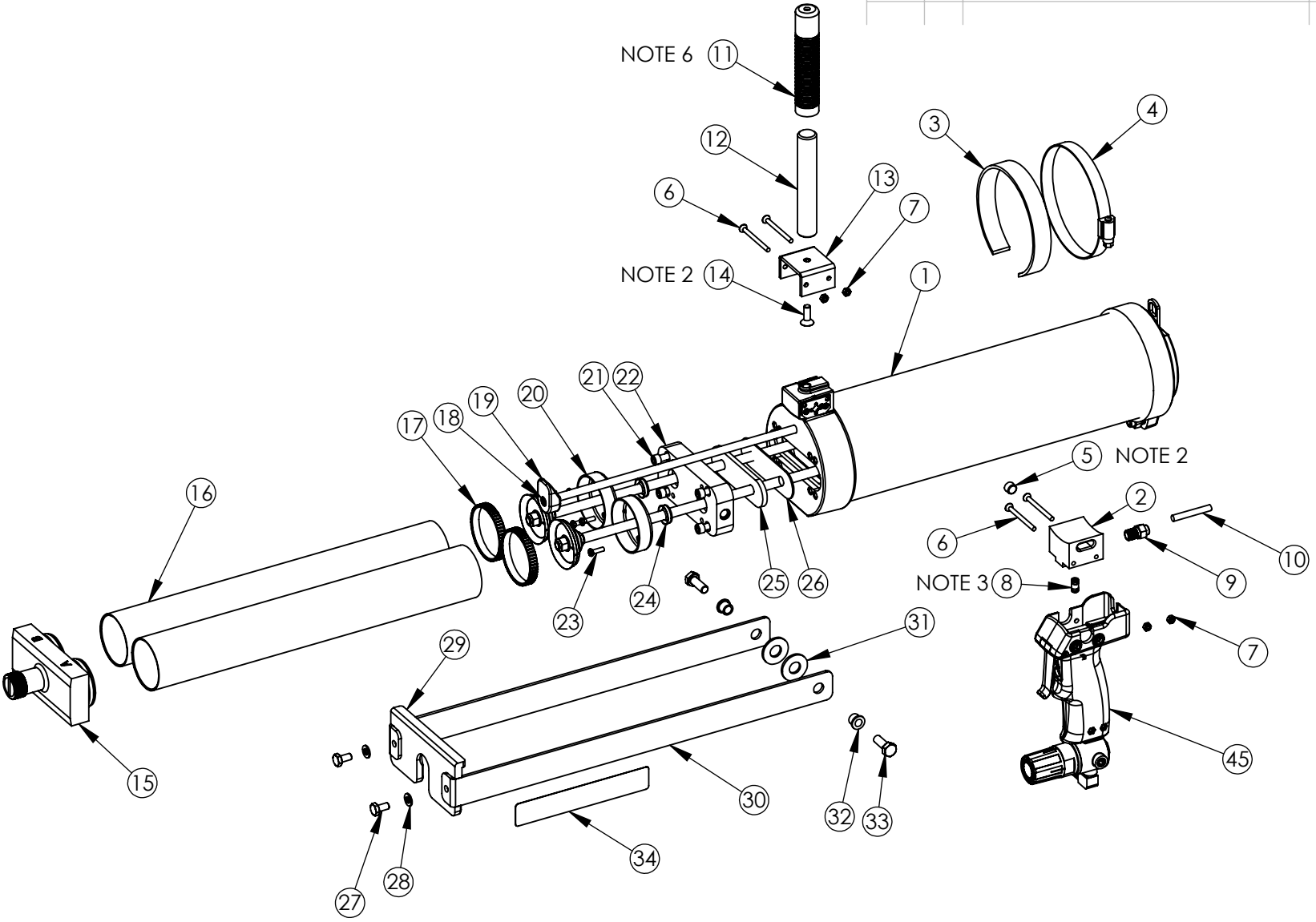
Albion DISPENSING SOLUTIONS

Albion Engineering Co.
 1250 N. Church St.
 Moorestown, NJ. 08057

DWG. NO. 954-21

REV. - SHEET 2 OF 5

CN		REV.	REVISIONS DESCRIPTION	DATE	APPROVED



NOTE 6

NOTE 2

NOTE 2

NOTE 3

PROPRIETARY AND CONFIDENTIAL
 THE INFORMATION CONTAINED IN THIS DRAWING IS THE SOLE PROPERTY OF ALBION ENGINEERING CO. ANY REPRODUCTION IN PART OR AS A WHOLE WITHOUT THE WRITTEN PERMISSION OF ALBION ENGINEERING CO. IS PROHIBITED.

MATERIAL	DATE	3/21/11
ALBION 447 MATERIAL SPEC.	DRAWN	BJM
FINISH	APP'VD	
	ORIGIN	DS548

DIMENSIONAL TOLERANCES UNLESS OTHERWISE SPECIFIED
 FRAC. ±1/64" ANG. ±30' DEC. ±.005"
 SIZE **A**
 SCALE: 1:6
GUN, AIR, TWIN SAUSAGE
 AT1200S-2

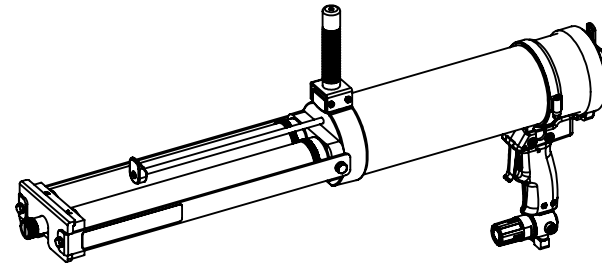



Albion Engineering Co.
 1250 N. Church St.
 Moorestown, NJ. 08057

DWG. NO.	954-21	REV.	-	SHEET 3 OF 5
----------	--------	------	---	--------------

ITEM #	PART #	DDESCRIPTION	QTY
1	955-6	DRIVE ASSEMBLY	1
2	972-7	REAR BRACKET	1
3	972-11	GASKET	1
4	690-5	HOSE CLAMP	1
5	138-22	1/8NPT PLUG	1
6	10-103	M4 FLAT HEAD SCREW	4
7	37-43	M4 NUT	4
8	957-5	UNION TUBE	1
9	978-9	HOSE ADAPTER	1
10	994-5	TUBE	1
11	972-10	PLASTIC HANDLE	1
12	972-9	ALUMINUM HANDLE	1
13	972-8	FRONT BRACKET	1
14	10-118	1/4-28 FLAT HEAD SCREW	1
15	645-G05	MANIFOLD	1
16	237-37	BARREL	2
17	3-5	LOCKRING	2
18	10-77	10-24 FLAT HEAD SCREW	1
19	972-3	PULL, INDICATOR ROD	1
20	2-28	BACK CAP	2
21	10-98	1/4-20 SOCKET HEAD SCREW	4
22	972-1	BACK PLATE	1
23	10-73	10-32 HEX HEAD SCREW	4
24	534-1	U-CUP	2
25	972-5	ROD LOCATOR	1
26	972-4	ROD GASKET	1
27	10-57	1/4-28 HEX HEAD SCREW	2
28	39-110	WASHER	2
29	606-4	FRONT PLATE	1
30	972-2	SIDE STRAP	2
31	512-17	BRONZE WASHER	2
32	512-18	PIVOT BEARING	2
33	10-97	5/16-24 HEX HEAD SCREW	2
34	500-597	LABEL	1

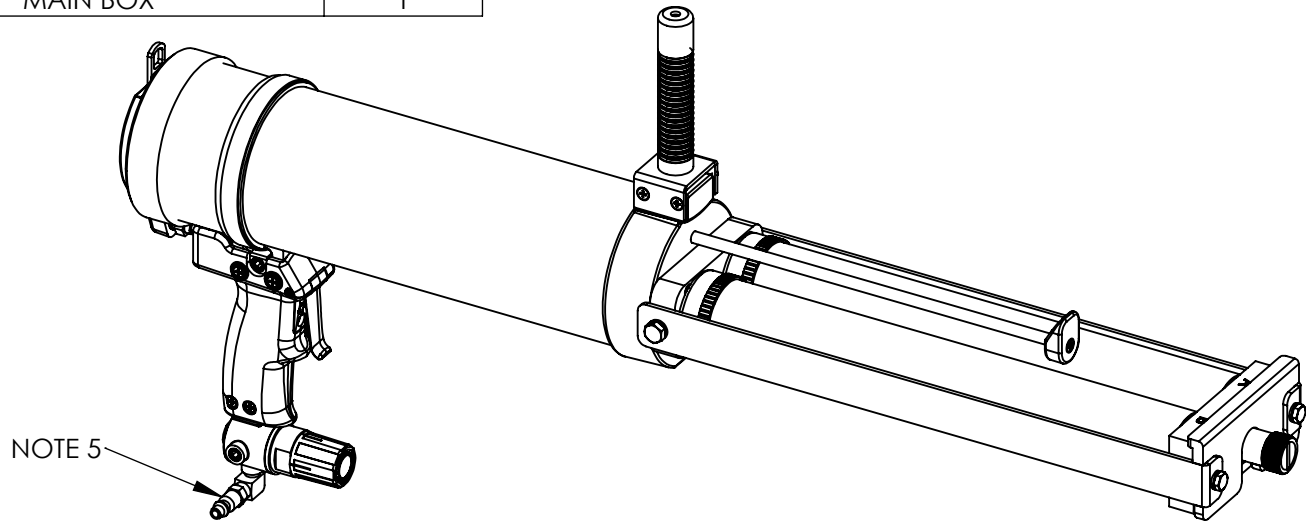
REVISIONS				
CN	REV.	DESCRIPTION	DATE	APPROVED
CN1291	1	THRED SPEC. FOR 10-97 WAS 1/4-28	7/18/12	
CN1310	2	THREAD SPEC. FOR 10-97 WAS 5/16-18 THIS CORRECTION WAS A TYPO NOT AN UPDATE TO PART	2/6/13	




PROPRIETARY AND CONFIDENTIAL THE INFORMATION CONTAINED IN THIS DRAWING IS THE SOLE PROPERTY OF ALBION ENGINEERING CO. ANY REPRODUCTION IN PART OR AS A WHOLE WITHOUT THE WRITTEN PERMISSION OF ALBION ENGINEERING CO. IS PROHIBITED.	MATERIAL	DATE	3/21/11	DIMENSIONAL TOLERANCES UNLESS OTHERWISE SPECIFIED FRAC. ±1/64" ANG. ±30' DEC. ±.005"	SIZE	A	 Albion Engineering Co. 1250 N. Church St. Moorestown, NJ. 08057		
	ALBION 447 MATERIAL SPEC.	DRAWN	BJM		SCALE:1:10				
	FINISH	APPVD		GUN, AIR, TWIN SAUSAGE AT1200S-2	DWG. NO.	954-21		REV.	2
	-----	ORIGIN	DS548						SHEET 4 OF 5

ITEM #	PART #	DESCRIPTION	QTY
35	37-46	5/16-18 NYLOC NUT	2
36	873-6	PACKING	6
37	873-10	CONCAVE WASHER	2
38	366-59	PISTON ROD	2
39	672-3	INDICATOR ROD	1
40	37-4	10-32 NUT	1
41	10-112	CAPTIVE SCREW	1
42	37-35	3/8-24 JAM NUT	2
43	652-4	ROD RETAINER	1
44	978-23	RETAINER	1
45	981-1	HANDLE ASSEMBLY	1
46	501-141	INSTRUCTIONS	2
47	745	CATALOG	1
48	500-519	BOX LABEL	1
49	39-111	WASHER	2
50	37-42	5/16-18 JAM NUT	2
51	357-55	MAIN BOX	1

REVISIONS				
CN	REV.	DESCRIPTION	DATE	APPROVED
CN1297	1	DELETE (1)500-129 - ADD (2)500-141	1/14/13	
CN1336	2	ITEM 35 WAS 37-12, ITEM 49 WAS 357-14, ITEM 50 WAS 357-15 DELETE (4)37-12, (1)357-14 & (1)357-15 - ADD (2)37-42, (2)37-46 & (2)39-111	8/20/13	



PROPRIETARY AND CONFIDENTIAL THE INFORMATION CONTAINED IN THIS DRAWING IS THE SOLE PROPERTY OF ALBION ENGINEERING CO. ANY REPRODUCTION IN PART OR AS A WHOLE WITHOUT THE WRITTEN PERMISSION OF ALBION ENGINEERING CO. IS PROHIBITED.	MATERIAL	DATE	3/21/11	DIMENSIONAL TOLERANCES UNLESS OTHERWISE SPECIFIED FRAC. ±1/64" ANG. ±30' DEC. ±.005"	SIZE	A	 Albion Engineering Co. 1250 N. Church St. Moorestown, NJ. 08057	
	ALBION 447 MATERIAL SPEC.	DRAWN	BJM		SCALE:1:5			
	FINISH	APP'VD	GUN, AIR, TWIN SAUSAGE AT1200S-2		DWG. NO.	954-21	REV.	1
	-----	ORIGIN			DS548	SHEET 5 OF 5		